

TECHNICAL MANUAL

DIRECT AND GENERAL SUPPORT AND DEPOT MAINTENANCE
REPAIR PARTS AND SPECIAL TOOLS LISTS

COMPRESSOR, RECIPROCATING,

ELECTRIC MOTOR DRIVEN,

4 CFM, 3000 PSI

(STEWART WARNER MDL 12010A)

FSN 4310-196-1617

H E A D Q U A R T E R S , D E P A R T M E N T O F T H E A R M Y
MAY 1971

DIRECT AND GENERAL SUPPORT AND DEPOT MAINTENANCE
 REPAIR PARTS AND SPECIAL TOOLS LISTS

COMPRESSOR, RECIPROCATING,
 ELECTRIC MOTOR DRIVEN,
 4 CFM, 3000 PSI
 (STEWART WARNER MDL 12010A)
 FSN 4310-196-1617
 Current as of 29 April 1971

		<i>Paragraph</i>	<i>Page</i>
Section I.	INTRODUCTION.....		iii
	Scope	1	iii
	General.....	2	iii
	Explanation of columns	3	iii
	Special information	4	v
	How to locate repair parts	5	v
	Abbreviations	6	v
	Federal supply codes for manufacturers	7	vi
	Recommendations for maintenance publications improvements	8	vi
		<i>Listing Page</i>	<i>Illus Figure</i>
II.	REPAIR PARTS FOR DS, GS, AND DEPOT MAINTENANCE.....	1	
Group 01.	Air Lines and Fittings.....	1	1
	02. Separator.....	2	2
	03. Dump Valve.....	3	3
	04. Control Box and Timer	3	4
	Control box components	5	
	05. Electric Motor	4	6
	Electric motor components	7	
	06. Compressor	7	
	Aftercooler and guard	8	
	First stage cylinder, piston and valve assembly	9	
	Second and third stage cylinder	10	
	Crankshaft and oil pump components	11	
	07. Repair Kits	15	
Section III.	SPECIAL TOOLS, TEST AND SUPPORT EQUIPMENT FOR DS, GS, AND DEPOT MAINTENANCE -Not Applicable		
IV.	FEDERAL STOCK NUMBER AND REFERENCE NUMBER INDEX	29	

SECTION I INTRODUCTION

1. Scope

This manual lists repair parts required for the performance of direct support, general support, and depot maintenance of the compressor.

2. General

This Repair Parts and Special Tools List is divided into the following sections:

a. Repair Parts Section II. A list, in figure and item number sequence, of repair parts authorized for the performance of maintenance at the direct support, general support, and depot level, including those items which must be removed for replacement of the authorized item. Items, except kits and sets, are listed by assembly groups in top down breakdown sequence. Repair parts kits and sets are listed separately as Group 07 at the end of the Repair Parts List without regard to the assembly group to which they belong. Components of the kits and sets are listed in their proper sequence in the assembly group to which they belong and are referenced to the FSN of the kit or set.

b. Special Tools, Test and Support Equipment Section III. A list of special tools, test and support equipment authorized for the performance of maintenance at the direct support, general support, and depot level Not applicable.

c. Federal Stock Number and Reference Number Index Section IV. A list of Federal stock numbers in ascending numerical sequence followed by a list of reference numbers in ascending alpha-numeric sequence, cross-referenced to the illustration figure number and item number.

Note. Items not illustrated are 'cross-referenced to group number.

3. Explanation of Columns

The following provides an explanation of columns in the tabular lists in sections II and III:

a. Source, Maintenance, and Recoverability Code (SMR).

(1) *Source code.* Indicates the source for the listed items. Source codes are:

Code	Explanation
P	Repair Parts, Special Tools and Test Equipment supplied from GSA/DSA, or Army supply system, and authorized for use at indicated maintenance categories.

P2 Repair Parts, Special Tools and Test Equipment which are procured and stocked for insurance purposes because the combat or military essentially of the end item dictates that a minimum quantity be available in the supply system.

M Repair Parts, Special Tools and Test Equipment which are not procured or stocked, as such, in the supply system but are to be manufactured at indicated maintenance levels.

A Assemblies which are not procured or stocked as such, but are made up of two or more units.

Such component units carry individual stock numbers and descriptions, are procured and stocked separately and can be assembled to form the required assembly at indicated maintenance categories.

X Parts and assemblies that are not procured or stocked because the failure rate is normally below that of the applicable end item or component. The failure of such part or assembly should result in retirement of the end item from the supply system.

X1 Repair Parts which are not procured or stocked. The requirement for such items will be filled by the next higher assembly or component.

X2 Repair Parts, Special Tools, and Test Equipment which are not stocked and have no foreseen mortality. The indicated maintenance category requiring such repair parts will attempt to obtain the parts through cannibalization or salvage, the item may be requisitioned with exception data, from the end item manager, for immediate use.

G Major assemblies that are procured with PEMA funds for initial issue only as exchange assemblies at DSU and GSU level. These assemblies will not be stocked above DS and GS level or returned to depot supply level.

(2) *Maintenance code.* Indicates the lowest category of Maintenance authorized to install the listed item. The maintenance level codes are:

Code	Explanation
C	Operator/Crew maintenance
O	Organizational maintenance
F	Direct Support maintenance
H	General Support maintenance
D	Depot maintenance

(3) *Recoverability code.* Indicates whether unserviceable items should be returned for recovery or salvage. Items not coded are expendable. Recoverability codes are:

<i>Code</i>	<i>Explanation</i>
R	Applied to repair parts, (assemblies and components) special tools and test equipment which are considered economically repairable at direct and general support maintenance levels. When the item is no longer economically repairable, it is normally disposed of at the GS level. When supply consideration dictate, some of the repair parts may be listed for automatic return to supply for depot level repair as set forth in AR '710-50. When so listed, they will be replaced by supply on an exchange basis.
S	Repair Parts, Special Tools, Test Equipment and assemblies which are economically repairable at DSU and GSU activities and which normally are furnished by supply on an exchange basis. When items are determined by a GSU to be uneconomically repairable, they will be evacuated to a depot for evaluation and analysis before final disposition.
T	Higher dollar value recoverable repair parts, special tools and test equipment which are subject to special handling and are issued on an exchange basis. Such items will be repaired or overhauled at depot maintenance activities only. No repair may be accomplished at lower levels.
U	Repair Parts, Tools and Test Equipment specifically selected for salvage by reclamation units because of precious metal content, critical materials, high dollar value or reusable casings or castings.

b. Federal Stock Number. This column indicates the Federal stock number assigned to the item and will be used for requisitioning purposes.

c. Description. This column indicates the Federal item name and a minimum characteristic description required to describe the item. Assembly components and subassemblies are indented under major assemblies. The abbreviation "w/e" when used as a part of the nomenclature indicates the Federal stock number includes all armament, equipment, accessories, and repair parts issued with the item. A part number or other reference number is followed by the applicable five-digit Federal supply code for manufacturer in parenthesis. Repair part quantities included in kits and sets are shown in front of the repair part name. Material required for manufacture or fabrication is identified.

d. Unit of Measure (U/M). A two-character alphabetic abbreviation indicating the amount or quantity of the item, as used, upon which the allowances are based, e.g., ft, ea., pr., etc.

e. Quantity Incorporated in Unit. This column indicates the quantity of the item used in the assembly group. A "V" appearing in this column in lieu of a quantity indicates that a definite quantity cannot be indicated (e.g., shims, spacers, etc.).

f. 30-Day DS/GS Maintenance Allowances.

Note. Allowances in the GS column are for GS maintenance only.

(1) The allowance columns are divided into three subcolumns. Indicated in each subcolumn, opposite the first appearance of each item, is the total quantity of items authorized for the number of equipments supported. Subsequent appearances of the same item will have the letters "REF" in the applicable allowance columns indicating total allowance quantities will be shown with the first appearance of the item. To locate the referenced item, locate the FSN or reference number in the index. The earliest figure and item number is the referenced item. Items authorized for use as required but not for initial stockage are identified with an asterisk in the allowance column.

(2) The quantitative allowances for DS/ GS levels of maintenance will represent initial stockage for a 30-day period for the number of equipments supported.

(3) To determine allowances when supporting more than 100 of these equipments: First, divide the number of equipments supported by 100 by moving the decimal two places left; second, multiply the result by the quantity in the 51-100 density column. Example, authorized allowances for 51-100 equipments is 40; for 150 equipments multiply 40 by 1.50 or 60 parts required.

g. One-Year Allowances Per 100 Equipments/ Contingency Planning Purposes. This column indicates opposite the first appearance of each item the total quantity required for distribution and contingency planning purposes. Subsequent appearances of the same item will have the letters "REF" in this column. To locate the referenced item, locate the FSN or reference number in the index. The earliest figure and item number is the referenced item.

The range of items indicates total quantities of all authorized items required to provide adequate support of 100 equipments for one year.

h. Depot Maintenance Allowance Per 100 Equipments. This column indicates opposite the first appearance of each item the total quantity authorized for depot maintenance of 100 equipments. Subsequent appearances of the same item will have the letters "REF" in the allowance column. To locate the referenced item, locate the FSN or reference number in the index. The earliest figure and item number is the referenced item. Items authorized for use as required but not for initial stockage are identified with an asterisk in the allowance column.

i. Illustration. This column is divided as follows:

(1) Figure number. Indicates the figure number of the illustration on which the item is shown.

(2) Item number. Indicates the callout number used to reference the item in the illustration.

4. Special Information

a. Repair parts mortality has been based on 1,000 hours of operation per year.

b. Parts which require manufacture or assembly at a category higher than that authorized for installation will indicate in the source column the higher category.

c. The following publications pertain to compressor and its components:

LO 9-2350-230-12	Lubrication order
TM 9-2350-230-12	Operator and Organizational Maintenance Manual
TM 9-2350-230-25P/2	Organizational, Direct and General Support and Depot Maintenance Repair Parts and special Tools list manual

5. How to Locate Repair Parts

a. When Federal stock number, reference number or part number is unknown:

(1) Using the table of contents, determine the assembly group within which the repair part belongs. This is necessary since illustrations are prepared for assembly groups, and listings are divided into the same groups.

(2) Find the illustration covering the assembly group to which the repair part belongs.

(3) Identify the repair part on the illustration and note the illustration figure number and item number of the repair part.

(4) Using the Repair Parts Listing, find the assembly group to which the repair part belongs and locate the illustration figure and item number noted on the illustration.

b. When the Federal stock number, reference number, or part number is known:

(1) Using the Index of Federal Stock Numbers, Reference Numbers, and/or Part Numbers find the pertinent Federal stock number, reference number, and/or part number. This index is in ascending FSN sequence followed by a list of reference numbers or part numbers in ascending alpha-numeric sequence, cross-referenced to the illustration figure number and item number.

(2) Using the Repair Parts Listing, find the assembly group of the repair part and the illustration figure number and item number referenced in the Index of Federal Stock Numbers, Reference Numbers, or Part Numbers.

c. When the Federal stock number, reference number, or part number is known and the repair part is not illustrated:

(1) Using the Index of Federal Stock Numbers, Reference Numbers, or Part Numbers find the pertinent Federal stock number, reference number, or part number in the section titled "Items Not Illustrated" and note the group number. This section is in ascending FSN sequence followed by a list of reference numbers or part numbers in alpha-numeric sequence, cross-referenced to assembly group number.

(2) Using the Table of Contents, locate the assembly group number and page number.

(3) Using the applicable group number and page number, locate the pertinent FSN, reference number, or part number in the Repair Parts Listing. Items which are not illustrated are listed at the end of the assembly group to which they belong.

6. Abbreviations

amp	ampere (s)
ea	each
mtg	mounting

7. Federal Supply Codes for Manufacturers

<i>Code</i>	<i>Manufacturer</i>
03038	Long-Lok Corp.
06370	Fike Metal Products Corp.
08484	Breeze Corporations Inc.
21335	Fafnir Bearing Co., Division of Textron Inc., The 43334 .New Departure-Hyatt Bearings, Division General Motors Corp.
56878	Standard Pressed Steel Co.
60380	Torrington Co. , The
77200	Pesco Products, Division of Borg Warner Corp.
78385	South Wind, Div. of Stewart-Warner Corp.
80201	Chicago Rawhide Mfg. Co.

80205	National Aerospace Standards Committee, Aeronautical Industries Association of America 88044. Aeronautical Standards Group, Dept. of Navy and Air Force 91816 . James Pond and Clark Inc.
92003	Parker Aircraft Co.
93410	Stemco Controls, Controls Division of Essex Wire Corp.
96906	Military Standards Promulgated by Standardization, Div. Directorate of Logistic Services DSA

8. Recommendations for Maintenance

Publication Improvements

Report of errors, omissions, and recommendations for improving this publication by the individual user is encouraged. Reports should be submitted on DA Form 2028 (Recommended Changes to Publications), and forwarded direct to Commanding General, U. S. Army Mobility Equipment Command, ATTN: AMSME-MPP, 4300 Goodfellow Boulevard, St. Louis, Mo. 63120.

(1) SMR CODE	(2) FEDERAL STOCK NUMBER	(3) DESCRIPTION REF. NUMBER & MFR CODE USABLE ON CODE	(4) UNIT OF MEAS	(5) QTY INC IN UNIT	(6) 30-DAY DS MAINT ALLOWANCE			(7) 30-DAY GS MAINT ALLOWANCE			(8) 1-YR ALW PER 100 EQUIP CNTGCTY	(9) DEPOT MAINT ALW PER 100 EQUIP	(10) ILLUSTRATION	
					(a)	(b)	(c)	(a)	(b)	(c)			(a)	(b)
					1-20	21-50	51-100	1-20	21-50	51-100			FIG NO.	ITEM NO.
		SECTION II - REPAIR PARTS FOR DS, GS AND DEPOT MAINTENANCE												
		GROUP 01 - AIR LINES AND FITTINGS												
P F		TUBE ASSEMBLY, SEPARATOR 4428-0346 (78385)	EA	1	*	*	1	*	*	1	6	15	1	1
P F	4730-722-7214	ELBOW MS24394C4 (96906)	EA	1	*	*	*	*	*	*	2	5	1	2
P F	4730-580-7302	NUT AN6289C4 (80.44)	EA	1	*	*	*	*	*	*	3	5	1	3
P F	5330-186-4947	RING, GASKET MS23777-4 (96906)	EA	1	*	1	2	*	1	2	20	100	1	4
P F	5330-805-2966	PACKING, PREFORMED MS23778-4 (96906)	EA	1	2	4	8	2	4	8	100	500	1	5
X2F		CLAMP, HOSE: SEPARATOR MTG QS100M52S (08484)	EA	1									1	6
P F		TUBE ASSEMBLY, DUMP VALVE 4428-0347 (78385)	EA	1	*	*	*	*	*	*	5	15	1	7
PF	4730-331-4950	ELBOW MS20822-4C (96906)	EA	1	*	*	*	*	*	*	3	5	1	8
P F	5330-186-4947	RING, GASKET MS28777-4 (96906)	EA	1	REF	REF	REF	REF	REF	REF	REF	REF	1	9
P F	5330-805-2966	PACKING, PREFORMED MS28778-4 (96906)	EA	1	REF	REF	REF	REF	REF	REF	REF	REF	1	10
P F		FITTING, SPECIAL: SEPARATOR 428-0499 (78385)	EA	1	*	*	*	*	*	*	5	5	1	11
P F	1650-600-4383	FITTING, INLET: SEPARATOR 2670131 (78385)	EA	1	*	*	*	*	*	*	3	5	1	12
P F	4730-580-7302	NUT AN6289C4 (88044)	EA	1	REF	REF	REF	REF	REF	REF	REF	REF	1	13
P F	5330-186-491:7	RING, GASKET MS28777-4 (96906)	EA	1	REF	REF	REF	REF	REF	REF	REF	REF	1	14
P F	5330-805-2966	PACKING, PREFORMED MS28778-4 (96906)	EA	1	REF	REF	REF	REF	REF	REF	REF	REF	1	15
P F		TUBE ASSEMBLY, SEPARATOR 4428-0345 (78385)	EA	1	*	*	1	*	*	1	6	10	1	16
P F	5330-805-2966	PACKING, PREFORMED MS28778-4 (96906)	EA	1	REF	REF	REF	REF	REF	REF	REF	REF	1	17
P F	5330-186-4947	RING, GASKET MS28777-4 (96906)	EA	1	REF	REF	REF	REF	REF	REF	REF	REF	1	18
P F	4730-580-7302	NUT AN6289C4 (88044)	EA	1	REF	REF	REF	REF	REF	REF	REF	REF	1	19
P F	4730-722-7214	ELBOW MS24394C4 (96906)	EA	1	REF	REF	REF	REF	REF	REF	REF	REF	1	20
P F		VALVE, PRESSURE RELIEF 117B100-25 (78385)	EA	1	*	*	1	*	*	1	10	10	1	21
P F		VALVE, CHECK 249A4TT (91816)	EA	1	*	*	1	*	*	1	10	10	1	22
P F		VALVE, BACK PRESSURE 2670100-8 (78385)	EA	1	*	*	1	*	*	1	10	10	1	23
P F		TUBE ASSEMBLY, PRESSURE SWITCH 4428-0495 (78385)	EA	1	*	*	1	*	*	1	6	5	1	24
P F	4730-722-7214	ELBOW MS24394C4 (96906)	EA	1	REF	REF	REF	REF	REF	REF	REF	REF	1	25

(1) SMR CODE	(2) FEDERAL STOCK NUMBER	(3) DESCRIPTION REF. NUMBER & MFR CODE USABLE ON CODE	(4) UNIT OF MEAS	(5) QTY INC IN UNIT	(6) 30-DAY DS MAINT ALLOWANCE			(7) 30-DAY GS MAINT ALLOWANCE			(8) 1-YR ALW PER 100 EQUIP CNTGCT	(9) DEPOT MAINT ALW PER 100 EQUIP	(10) ILLUSTRATION	
					(a)	(b)	(c)	(a)	(b)	(c)			(a)	(b)
					1-20	21-50	51-100	1-20	21-50	51-100			FIG NO.	ITEM NO.
P F	4730_580-7302	NUT AN6289C4 (38044)	EA	1	REF	REF	REF	REF	REF	REF	REF	REF	1	26
P F	5330-186-4947	RING, GASKET MS28777-4 (96906)	EA	1	REF	REF	REF	REF	REF	REF	REF	REF	1	27
P F	5330-805-2966	PACKING PREFORMED MS28777T3-4 (96906)	EA	1	REF	REF	REF	REF	REF	REF	REF	REF	1	28
P F		SWITCH ASSEMBLY, PRESSURE 4445-0227 (78385)	EA	1	*	*	1	*	*	1	10	10	1	29
P F	5330-805-2966	PACKING PREFORMED MS28778-4 (96906)	EA	1	REF	REF	REF	REF	REF	REF	REF	REF	1	30
P O	4730-698-4033	UNION, FLARE TUBE FITTING: DISCHARGE AN832-4J (88044)	EA	1	*	*	*	*	*	*	3	3	1	31
P F	5310-685-3228	WASHER, LOCK: UNION MS35333-43 (96906)	EA	1	*	*	*	*	*	*	1	5	1	32
P F	5310-807-1469	NUT, SELF-LOCKING: BRACKET MTG 1S21042-5 (96906)	EA	1	*	*	*	*	*	*	2	10	1	33
P F	5305-810-4412	SCREW, CAP, SOCKET HEAD: BRACKET MOUNTING NAS608-3H1OP (80205)	EA	1	*	*	*	*	*	*	2	10	1	34
P F	5310-167-0818	WASHER, FLAT: BRACKET MTG AN960-10 (88044)	EA	1	*	*	*	*	*	*	2	10	1	35
X2F		BRACKET 407-0432 (78385)	EA	1									1	36
P F	5310-734-5759	NUT, FLARED TUBE FITTING AN924-4C (88044)	EA	1	*	*	*	*	*	*	3	5	1	37
P F	5330-805-2966	PACKING PREFORMED MS28778-4 (96906)	EA	1	REF	REF	REF	REF	REF	REF	REF	REF	1	38
P F	4730-990-9790	TEE, INTERNAL SCREW THREAD AN938C4 (88044)3	EA	1	*	*	*	*	*	*	3	3	1	39
P F	4730-331-4950	ELBOW MS20822-4C (96906)	EA	1	REF	REF	REF	REF	REF	REF	REF	REF	1	40
P F	4730-580-7302	NUT AN6289C4 (88044)	EA	1	REF	REF	REF	REF	REF	REF	REF	REF	1	41
P F	5330-186-4947	RING, GASKET MS28777-4 (96906)	EA	1	REF	REF	REF	REF	REF	REF	REF	REF	1	42
P F		ELBOW PAB21-0604 (92003)	EA	1	*	*	*	+	*	*	3	5	1	43
		GROUP 02 - SEPARATOR												
P F	1450_-887_4634	SEPARATOR ASSEMBLY, MOISTURE 4455-0027 (78385)	EA	1	*	*	*	*	*	*	5	5	2	
X2F		RETAINER 408-0236 (78385)	EA	1									2	1
P F	1270-830-2836	DISC, RUPTURE 2741031 (78385)	EA	1	*	1	2	*	1	2	20	10	2	2
P H	5930-015-0041	SWITCH, THERMOSTAT 645-0055 (78385)	EA	1				*	*	*	5	10	2	3
X1		SHELL 457-0040 (78385)	EA	1									2	4
PH	4310-433-3012	BLANKET, HEATER 3810123 (78385)	EA	1				*	*	1	6	5	2	5
X1		SCREW AND PLUG ASSEMBLY 130B0487 (78385) (PART OF KIT, FSN 4310-097-9832)	EA	1									2	6

(1) SMR CODE	(2) FEDERAL STOCK NUMBER	(3) DESCRIPTION REF. NUMBER & MFR CODE USABLE ON CODE	(4) UNIT OF MEAS	(5) QTY INC IN UNIT	(6) 30-DAY DS MAINT ALLOWANCE			(7) 30-DAY GS MAINT ALLOWANCE			(8) 1-YR ALW PER 100 EQUIP CNTGCT	(9) DEPOT MAINT ALW PER 100 EQUIP	(10) ILLUSTRATION	
					(a)	(b)	(c)	(a)	(b)	(c)			(a)	(b)
					1-20	21-50	51-100	1-20	21-50	51-100			FIG NO.	ITEM NO.
X1		WASHER, FLAT 130A1581 (78385) (PART OF KIT, FSN 4310-097-9832)	EA	1									2	7
X1		ELEMENT, FILTER 130B1759 (78385) (PART OF KIT, FSN 4310-097-9832)	EA	1									2	8
X1		GASKET, FILTER 130A1580 (78385) (PART OF KIT, FSN 4310-097-9832)	EA	1									2	9
X1		O RING 48A113 (78385) (PART OF KIT, FSN 4310-097-9832)	EA	1									2	10
X2F		CAP, TANK 408-0233 (78385)	EA	1									2	11
		GROUP 03 - DUMP VALVE												
P F	4730-698-4035	NIPPLE AN81 6-4C (88044)	EA	1	*	*	*	*	*	*	3	5	3	1
P F		VALVE ASSEMBLY, DUMP 4465-0043 (78385)	EA	1	*	*	1	*	*	1	10	10	3	
P H	4730-580-7302	NUT AN6289C4 (88044)	EA	1				REF	REF	REF	REF	REF	3	2
X2H		UNION 428-0493 (78385)	EA	1									3	3
P H	5330-805-2966	PACKING, PREFORMED MS28778-4 (96906)	EA	1				REF	REF	REF	REF	REF	3	4
X1		SEAT, DUMP VALVE 465-0143 (78385)	EA	1									3	5
X2H		RING, RETAINING MS16625-1143 (96906)	EA	1									3	6
P H	5330-579-8156	PACKING MS28775-212 (96906)	EA	1				*	1	2	20	100	3	7
X1		PISTON 4190160 (78385)	EA	1									3	8
P H	5330-579-7914	PACKING, PREFORMED MS2875-217 (96906)	EA	1				*	1	2	20	100	3	9
X1		CAP, END, VALVE 4080235 (78385)	EA	1									3	10
X1		BODY, DUMP VALVE 410-0352 (78385)	EA	1									3	11
		GROUP 04 - CONTROL BOX AND TIMER												
P F	5305-514-7506	SCREW, MACHINE: TIMER MTG AN500A6-4 (88044)	EA	4	*	*	*	*	*	*	1	10	4	1
P F		TIMER AND CABLE ASSEMBLY 4445-0225 (78385)	EA	1	*	*	1	*	*	1	10	10	4	2
P F	5310-807-1469	NUT, SELF-LOCKING: BRACKET MTG MS21042-5 (96906)	EA	2	REF	REF	REF	REF	REF	REF	REF	REF	4	3
P F	5305-j10-4412	SCREW, CAP, SOCKET HEAD: BRACKET MOUNTING NAS608-3H10P (80205)	EA	2	REF	REF	REF	REF	REF	REF	REF	REF	4	4
P F	5310-167-0818	WASHER, FLAT: BRACKET MTG AN960 (88044)	EA	2	REF	REF	REF	REF	REF	REF	REF	REF	4	5
X2F		BRACKET, SUPPORT 407-0436 (78385)	EA	1									4	6

(1) SMR CODE	(2) FEDERAL STOCK NUMBER	(3) DESCRIPTION REF. NUMBER & MFR CODE USABLE ON CODE	(4) UNIT OF MEAS	(5) QTY INC IN UNIT	(6) 30-DAY DS MAINT ALLOWANCE			(7) 30-DAY GS MAINT ALLOWANCE			(8) 1-YR ALW PER 100 EQUIP CNTGCT	(9) DEPOT MAINT ALW PER 100 EQUIP	(10) ILLUSTRATION	
					(a)	(b)	(c)	(a)	(b)	(c)			(a)	(b)
					1-20	21-50	51-100	1-20	21-50	51-100			FIG NO.	ITEM NO.
X2F		BRACKET: TIMER MTG 4407-0094 (78385)	EA	1									4	7
P F	5306-754-1788	BOLT, MACHINE: CLAMP AND COVER MTG MS20074-05 (96906)	EA	4	*	*	*	*	*	*	1	5	4	8
P F	5310-141-1795	WASHER, FLAT: CLAMP AND COVER MTG AN960-416 (88044)	EA	4	*	*	*	*	*	*	1	5	4	9
X2F		CLAMP 701305 (78385)	EA	2									4	10
P F	5310-902-6676	NUT, SELF-LOCKING: CLAMP MTG MS20364-1032A	EA	1	*	*	*	*	*	*	1	5	4	11
P F	5305-614-o246	SCREW, MACHINE: CLAMP MTG MS35266-63 (96906)	EA	1	*	*	*	*	*	*	1	5	4	12
X2F		CLAMP, CUSHIONED MS2199DG4 (96906)	EA	1									4	13
P F	5310-982-4912	NUT, SELF-LOCKING: MOTOR MTG MS21045 (96906)	EA	4	*	*	*	*	*	*	1	5	4	14
P F	5310-167-0820	WASHER, FLAT: MOTOR MTG AN960-516 (88o44)	EA	4	*	*	*	*	*	*	2	5	4	15
X2F		COVER, CONTROL BOX 408-0234 (78385)	EA	1									4	16
X2F		CABLE GROUND 4445-0226 (78385)	EA	1									4	17
P F		CONTROL BOX ASSEMBLY 4407-0093 (78385)	EA	1	*	*	*	*	*	*	2	2	4	18
P F	5310-208-7589	NUT, CHECK: RELAY MTG AN316-4R (88044)	EA	4	*	*	*	*	*	*	1	5	5	1
P F	5310-582-5965	WASHER, LOCK: RELAY MTG MS35338-44 (96906)	EA	2	*	*	*	*	*	*	1	5	5	2
P F	5310-209-0786	WASHER, LOCK: RELAY MTG MS35335-33 (96906)	EA	2	*	*	*	*	*	*	1	5	5	3
P F	5305-680-0506	SCREW, CAP, HEXAGON HEAD: RELAY MOUNTING MS3525&86 (96906)	EA	2	*	*	*	*	*	*	1	5	5	4
P F	5305558-4887	SCREW, MACHINE: RECEPTACLE MTG MS35265-14 (96906)	EA	4	*	*	*	*	*	*	2	10	5	5
P F		RECEPTACLE AND CABLE ASSEMBLY 4445-0229 (78385)	EA	1	*	*	*	*	*	*	5	5	5	6
P F	5305-145-7011	SCREW, MACHINE: RECEPTACLE MTG AN503-8-8 (88044)	EA	4	*	*	*	*	*	*	2	10	5	7
P F		RECEPTACLE AND CABLE ASSEMBLY 4445-0224 (78385)	EA	1	*	*	*	*	*	*	5	5	5	8
P F	5325-185-0004	GROMMET ELASTIC MS35489-40 (96906)	EA	1	*	*	*	*	*	*	5	10	5	9
P F		CABLE ASSEMBLY: RELAY TO MOTOR 4445-0223 (78385)	EA	1	*	*	*	*	*	*	5	10	5	10
P F	5945-660-9315	RELAY: 200 AMP MS24171D1 (96906)	EA	1	*	*	1	*	*	1	6	10	5	11
X1		CONTROL BOX 407-0431 (78385)	EA	1									5	12
P F	5306-225-9085	GROUP 05 - ELECTRIC MOTOR SCREW, CAP, HEXAGON HEAD: COMPRESSOR TO ADAPTER MS35258-30 (96906)	EA	4	*	*	*	*	*	*	*	10	6	1

(1) SMR CODE	(2) FEDERAL STOCK NUMBER	(3) DESCRIPTION REF. NUMBER & MFR CODE USABLE ON CODE	(4) UNIT OF MEAS	(5) QTY INC IN UNIT	(6) 30-DAY DS MAINT ALLOWANCE			(7) 30-DAY GS MAINT ALLOWANCE			(8) 1-YR ALW PER 100 EQUIP CNTGCT	(9) DEPOT MAINT ALW PER 100 EQUIP	(10) ILLUSTRATION	
					(a)	(b)	(c)	(a)	(b)	(c)			(a)	(b)
					1-20	21-50	51-100	1-20	21-50	51-100			FIG NO.	ITEM NO.
P F	5310-514-6674	WASHER, LOCK: COMPRESSOR TO ADAPTER MS35335-34 (96906)	EA	4	*	*	*	*	*	*	2	10	6	2
P F		COUPLING, SPLINE DRIVE 423-0051 (78385)	EA	1	*	*	1	*	*	1	10	10	6	3
P F	5305-273-4962	SCREW, CAP, HEXAGON HEAD: ADAPTER TO MOTOR MS24677-49 (96906)	EA	4	*	*	*	*	*	*	1	5	6	4
X2F		ADAPTER: COMPRESSOR TO MOTOR 407-0430 (78385)	EA	1									6	5
P F R	6105-242-2867	MOTOR: DC 225344-100 (77200)	EA	1	*	*	1	*	*	1	6	5	6	6
P F	5310-720-8811	NUT, PLAIN, HEXAGON: STUD MS20341-516A (96906)	EA	1	*	*	*	*	*	*	1	3	7	1
P F	5310-167-0671	WASHER, LOCK: STUD MS35338-102 (96906)	EA	1	*	*	*	*	*	*	1	3	7	2
P F	5305-889-3002	SCREW, MACHINE: FILTER MTG MS35206-242 (96906)	EA	4	*	*	*	*	*	*	2	5	7	3
P F		FILTER: RADIO INTERFERENCE 22-7435 (77200)	EA	1	*	*	*	*	*	*	5	5	7	4
X2F		PLATE, IDENTIFICATION 99-5000-73 (77200)	EA	1									7	5
X2F		COVER ASSEMBLY 122-7429 (77200)	EA	1									7	6
P H	5305-771-4754	SCREW, CAP, SOCKET HEAD: FAN MTG NAS1351-4-20P (80205)	EA	1				*	*	*	1	3	7	7
P H	5310-809-4058	WASHER, FAN MS27183-10 (96906)	EA	1				*	*	*	1	5	7	8
P H		FAN 22-7434 (77200)	EA	1				*	*	*	3	5	7	9
P H	5310-809-4058	WASHER, FAN MS27183-10 (96906)	EA	1				REF	REF	REF	REF	REF	7	10
X2H		SPACER FAN 22-7439 (77200)	EA	1									7	11
P H	5305-995-2639	SCREW, CAP, SOCKET HEAD: RETAINER MOUNTING NAS1351-3-8P (80205)	EA	4				*	*	*	2	5	7	12
X2H		RETAINER, BEARING 22-7432 (77200)	EA	1									7	13
P H		BEARING, BALL 99_4907 (77200)	EA	1				*	*	*	6	20	7	14
P H		NUT, SELF-LOCKING: END BELL MTG MS20364-832C (96906)	EA	4				*	*	*	1	5	7	15
P H	5310-515-8058	WASHER, FLAT: END BELL MTG AN960-8 (88044)	EA	4				*	*	*	2	5	7	16
P F	5305-995-2639	SCREW, CAP, SOCKET HEAD: BRUSH MOUNTING NAS1351--8P (80205)	EA	4	REF	REF	REF	REF	REF	REF	REF	REF	7	17
P F	5310-261-8278	WASHER, LOCK: BRUSH MTG MS35338-100100 (96906)	EA	4	*	*	*	*	*	*	2	5	7	18
P F		BRUSH, ELECTRICAL 122-7433 (77200)	EA	4	*	1	2	*	1	2	20	400	7	19
P H		END BELL ASSEMBLY 122-7443 (77000)	EA	1				*	*	*	2	2	7	20
P H	5310-807-1469	NUT, SELF-LOCKING: HOLDER MTG MS21042-5 (96906)	EA	2				REF	REF	REF	REF	REF	7	21

(1) SMR CODE	(2) FEDERAL STOCK NUMBER	(3) DESCRIPTION REF. NUMBER & MFR CODE USABLE ON CODE	(4) UNIT OF MEAS	(5) QTY INC IN UNIT	(6) 30-DAY DS MAINT ALLOWANCE			(7) 30-DAY GS MAINT ALLOWANCE			(8) 1-YR ALW PER 100 EQUIP CNTGCY	(9) DEPOT MAINT ALW PER 100 EQUIP	(10) ILLUSTRATION	
					(a)	(b)	(c)	(a)	(b)	(c)			(a)	(b)
					1-20	21-50	51-100	1-20	21-50	51-100			FIG NO.	ITEM NO.
P H	5310-680-7296	WASHER, FLAT: HOLDER MTG NAS620-10L (80205)	EA	2				*	*	*	2	5	7	22
P H	5305-983-6652	SCREW, CAP, SOCKET HEAD: HOLDER MTG MS16998-29 (96906)	EA	2				*	*	*	1	3	7	23
P H	5310-680-7296	WASHER, FLAT: HOLDER MTG NAS620-10L (80205)	EA	2				REF	REF	REF	REF	REF	7	24
P H	5310-807-1469	NUT, SELF-LOCKING: HOLDER MTG MS21012-5 (96906)	EA	2				REF	REF	REF	REF	REF	7	25
P H	5310-680-7296	WASHER, FLAT: HOLDER MTG NAS620-10L (80205)	EA	2				REF	REF	REF	REF	REF	7	26
P H		SPRING, BRUSH 22-6176 (77200)	EA	8				*	*	*	2	5	7	27
X2H		HOLDER SPRING 22-7438 (77200)	EA	4									7	28
X2H		HOLDER, ELECTRICAL, BRUSH 22-7419 (77200)	EA	2									7	29
P H	5305-999-4085	SCREW, CAP, SOCKET HEAD: HOLDER MOUNTING NAS1351-3-14P (80205)	EA	2				*	*	*	1	3	7	30
P H	5310-680-7296	WASHER, FLAT: HOLDER MTG NA620-10L (80205)	EA	2				REF	REF	REF	REF	REF	7	31
P H	5305-058-0505	SCREW, CAP, SOCKET HEAD: RING MTG NAS1351-3-10P (80205)	EA	4				*	*	*	1	3	7	32
P H	5310-6807296	WASHER, FLAT: RING MTG NAS620-10L (80205)	EA	4				REF	REF	REF	REF	REF	7	33
X2H		TERMINAL ASSEMBLY 122-7437 (77200)	EA	2									7	34
X2H	5340-597-3302	INSERT MS21209F1-15 (96906)	EA	2									7	35
X1		TERMINAL, BRUSH 22-7436 (77200)	EA	1									7	36
X2H		HOLDER, ELECTRICAL, BRUSH 22-7419 (77200)	EA	2									7	37
X2H		INSULATOR RING 22-2760 (77200)	EA	1									7	38
X1		END BELL 22-7425 (77200)	EA	1									7	39
X2H		ROD ASSEMBLY, THRU 122-7441 -01 (77200)	EA	4									7	40
P H	5310-515-058	WASHER, FLAT: THRU ROD AN960-8 (88044)	EA	4				REF	REF	REF	REF	REF	7	41
P H		END BELL ASSEMBLY 122-7423 (77200)	EA	1				*	*	*	2	2	7	42
X2H		PIN, SPRING MS9048-005 (96906)	EA	1									7	43
P H	5340-803-5574	INSERT MS21209C5-15 (96906)	EA	4				*	*	*	2	5	7	44
P H		BEARING, BALL 99-4908 (T7200)	EA	1				*	*	1	6	20	7	45
P H		ARMATURE MOTOR 122-7442 (77200)	EA	1				*	*	*	2	2	7	46
P H	5340-829-2141	INSERT, ARMATURE MS212094-15 (96906)	EA	1				*	*	*	2	5	7	47

(1) SMR CODE	(2) FEDERAL STOCK NUMBER	(3) DESCRIPTION REF. NUMBER & MFR CODE USABLE ON CODE	(4) UNIT OF MEAS	(5) QTY INC IN UNIT	(6) 30-DAY DS MAINT ALLOWANCE			(7) 30-DAY GS MAINT ALLOWANCE			(8) 1-YR ALW PER 100 EQUIP CNTGCT	(9) DEPOT MAINT ALW PER 100 EQUIP	(10) ILLUSTRATION	
					(a)	(b)	(c)	(a)	(b)	(c)			(a)	(b)
					1-20	21-50	51-100	1-20	21-50	51-100			FIG NO.	ITEM NO.
P H	5305-995-2639	SCREW, CAP, SOCKET HEAD: TERMINAL MOUNTING NAS1351-3-8P (80205)	EA	1				REF	REF	REF	REF	REF	7	48
P H	5310-261-8278	WASHER, LOCK: TERMINAL MTG MS35338-100 (96906)	EA	1				REF	REF	REF	REF	REF	7	49
X2F		SCREW CAP: BASE MTG 99-4740-01 (77200)	EA	6									7	50
X2F		BASE, MOTOR 22-7424 (77200)	EA	1									7	51
P H	5970-770-5172	INSULATOR, THRU ROD 22-1364-21 (77200)	EA	4				*	*	1	10	20	7	52
P H		STATOR ASSEMBLY 122-7444 (77200)	EA	1				*	*	*	2	2	7	53
X2H	5940-819-8246	TERMINAL, LUG MS35448-3 (96906)	EA	1									7	54
X2H	5940-0506238	TERMINAL, LUG MS35446-2 (96906)	EA	2									7	55
P H		WINDING 122-7445 (77200)	EA	1				*	*	*	2	5	7	56
P H		WINDING 122-7446 (77200)	EA	1					*	*	2	5	7	57
P H		SCREW, CAP, SOCKET HEAD: POLE SHOE EE281-2 (77200)	EA	8				*	*	*	2	5	7	58
X2H		POLE SHOE EE325-6 (77200)	EA	4									7	59
X1		HOUSING, STATOR 1227431 (77200)	EA	1									7	60
X2H		STUD, COLLAR 99-4597-01 (77200)	EA	1									7	61
		GROUP 06 - COMPRESSOR												
P F T		COMPRESSOR ASSEMBLY 4410-0262 (78385)	EA	1	*	*	1	*	*	1	10	10	8	
P F	5305-558-7361	SCREW, MACHINE: NAMEPLATE MTG MS35223-42	EA	3	*	*	*	*	*	*	1	5	8	1
P F	5310-559-0070	WASHER, LOCK: NAMEPLATE MTG MS35333-38 (96906)	EA	3	*	*	*	*	*	*	1	5	8	2
X2F		NAMEPLATE: FAN GUARD 434-0310 (78385)	EA	1									8	3
P F	5305-842-5646	SCREW, MACHINE: FAN GUARD MS35265-69 (96906)	EA	6	*	*	*	*	*	*	3	20	8	4
P F	5310-576-5752	WASHER, LOCK: FAN GUARD MS35333-39 (96906)	EA	6	*	*	*	*	*	*	3	20	8	5
P F	4310-983-3071	GUARD, FAN 3260194 (78385) (REPLACED BY GUARD, P/N 408-0247 (78358))	EA	1	*	*	*	*	*	*	5	5	8	6
P F	5305-842-5646	SCREW, MACHINE: CLAMP MS35265-69 (96906)	EA	6	REF	REF	REF	REF	REF	REF	REF	REF	8	7
P F	5310-576-5752	WASHER, LOCK: CLAMP MS35333-39 (96906)	EA	6	REF	REF	REF	REF	REF	REF	REF	REF	8	8
P F	5340-769-5311	CLAMP, AFTERCOOLER 3260185 (78385)	EA	6	*	*	*	*	*	*	3	10	8	9

(1) SMR CODE	(2) FEDERAL STOCK NUMBER	(3) DESCRIPTION REF. NUMBER & MFR CODE USABLE ON CODE	(4) UNIT OF MEAS	(5) QTY INC IN UNIT	(6) 30-DAY DS MAINT ALLOWANCE			(7) 30-DAY GS MAINT ALLOWANCE			(8) 1-YR ALW PER 100 EQUIP CNTGCT	(9) DEPOT MAINT ALW PER 100 EQUIP	(10) ILLUSTRATION	
					(a)	(b)	(c)	(a)	(b)	(c)			(a)	(b)
					1-20	21-50	51-100	1-20	21-50	51-100			FIG NO.	ITEM NO.
P F	5365-449-5882	SHIM: CLAMP 430-0117 (78385)	EA	6	*	*	*	*	*	*	5	10	8	10
P F		AFTERCOOLER 4428-0348 (78385) (REPLACED BY AFTERCOOLER, P/N 4428-0353 (78385))	EA	1	*	*	1	*	*	1	10	20	8	11
P F		TUBE ASSEMBLY: SECOND TO THIRD STAGE INTERCOOLER 4428-0349 (78385)	EA	1	*	*	1	*	*	1	6	10	8	12
P F	4730-197-2916	ELBOW, TUBE: SECOND TO THIRD STAGE AN833-60 (88044)	EA	1	*	*	*	*	*	*	3	5	8	13
P F	4730-277-5083	NUT AN628906 (88044)	EA	1	*	*	*	*	*	*	3	5	8	14
X1		GASKET 130A0457 (78385) (PART OF KIT, FSN 4310-115-3979)	EA	1									8	15
X1		RING, GASKET MS28777-6 (96906) (PART OF KIT, FSN 4310-115-3979)	EA	1									8	16
P F	1040-784-7455	TUBE ASSEMBLY: FIRST TO SECOND 3260243 (78385)	EA	1	*	*	1	*	*	1	6	10	8	17
P F		BOLT DRAW 448-0553 (78385)	EA	1	*	*	*	*	*	*	5	5	8	18
P F	5310-939-0783	NUT, FAN MOUNTING MS21083N12 (96906)	EA	1	*	*	1	*	*	1	6	10	8	19
P F		FAN, COOLING 467-0014 (78385)	EA	1	*	*	1	*	*	1	6	10	8	20
P F		TEE ASSEMBLY 4428-0342 (78385)	EA	1	*	*	*	*	*	*	3	5	8	21
P F	4730-277-5084	NUT AN6289-6 (88044)	EA	1	*	*	*	*	*	*	3	5	8	22
X1		GASKET 130A0157 (78385) (PART OF KIT, FSN 4310-115-3980)	EA	1									8	23
X1		RING, GASKET MS28777-6 (96906) (PART OF KIT, FSN 4310-115-3980)	EA	1									8	24
P O	5305-954-3487	SCREW, MACHINE: COVER MTG MS35190-271 (96906) (USED WITH COVER, P/N 408-0232 (78385) AND FILTER, P/N 455 .OOi4 (78385))	EA	2	*	*	*	*	*	*	2	10	9	1
P O	5305-984-6216	SCREW, MACHINE: COVER MTG AN515-1 0-24 (88044) (USED WITH COVER, P/N 608-0013 (78385) AND FILTER, FSN 4310-115-3977)	EA	2	*	*	*	*	*	*	2	10	9	1
X20		COVER, FILTER 408.0232 (78385) (USED WITH SCREW, FSN 5305-954-3487 AND FILTER, P/N 455-048 (78385))	EA	1									9	2
P O		COVER, FILTER 608-0013 (78385) (USED WITH SCREW, FSN 5305-984-6216 AND FILTER, FSN 4310-115-3977))	EA	1	*	*	*	*	*	*	5	5	9	2
P O		FILTER, AIR 455-0048 (78385) (USED WITH REW, FSN 5305-9543487 AND COVER, P/N 408-0232 (78385))	EA	1	2	4	8	2	4	8	100	100	9	3

(1) SMR CODE	(2) FEDERAL STOCK NUMBER	(3) DESCRIPTION REF. NUMBER & MFR CODE USABLE ON CODE	(4) UNIT OF MEAS	(5) QTY INC IN UNIT	(6) 30-DAY DS MAINT ALLOWANCE			(7) 30-DAY GS MAINT ALLOWANCE			(8) 1-YR ALW PER 100 EQUIP CNTGCTY	(9) DEPOT MAINT ALW PER 100 EQUIP	(10) ILLUSTRATION	
					(a)	(b)	(c)	(a)	(b)	(c)			(a)	(b)
					1-20	21-50	51-100	1-20	21-50	51-100			FIG NO.	ITEM NO.
P 0	4310-115-3977	FILTER, AIR 4455-0021 (78385) (USED WITH SCREW, FSN 5305-984-6216 AND COVER, PIN 608-0013 (78385))	EA	1	2	4	8	2	4	8	100	100	9	3
P D		SCREW, MACHINE LP505-10-18 (03038)	EA	4							2	10	9	4
X1		NUT, SELF-LOCKING PS203651032A (96906) (PART OF KIT, FSN 4310-296-9254)	EA	1									9	5
P D	5310-183-4406	WASHER, FLAT AN96OPD10 (88044)	EA	1							2	10	9	6
X1		SCREW 260297 (78385) (PART OF KIT, FSN 4310-296-9254)	EA	1									9	7
X1		GASKET 3800138 (78385) (PART OF KITS, FSN 4310-296-9254 AND FSN 4310-115-2475)	EA	1									9	8
X1		SPRING, INTAKE: FIRST STAGE 3260165 (78385) (PART OF KIT, FSN 4310-296-9254)	EA	1									9	9
X1		VALVE, INTAKE: FIRST STAGE 3260164 (78385) (PART OF KIT, FSN 4310-296-9254)	EA	1									9	10
P D	4310-979-9288	PLATE, VALVE: FIRST STAGE 3260146 (78385)	EA	1							5	10	9	11
X1		VALVE, EXHAUST: FIRST STAGE 3260149 (78385) (PART OF KIT, FSN 4310-296-9254)	EA	2									9	12
X1		SPRING, EXHAUST VALVE: FIRST STAGE 3260148 (78385) (PART OF KIT, FSN 4310-296-9254)	EA	1									9	13
P D	4310-979-9294	STOP, VALVE: FIRST STAGE 326 147 (78385)	EA	1							5	5	9	14
X1		PACKING, PREFORMED 437-0279 (78385) (PART OF KIT, FSN 4310-296-9254)	EA	1									9	15
P D	4310-979-9283	CYLINDER HEAD: FIRST STAGE 3800137 (78385)	EA	1							5	5	9	16
X1		NUT, CYLINDER 50FK420 (56878) (PART OF KIT, FSN 4310-115-2475)	EA	4									9	17
X1		CYLINDER: FIRST STAGE 421-0068 (78385) (PART OF KIT, FSN 4310-115-2475)	EA	1									9	18
X1		GASKET: CYLINDER, FIRST STAGE 437-0338 (78385) (PART OF KIT, FSN 4310-115-2475)	EA	1									9	19
X1		SHIM: CYLINDER, FIRST STAGE 437-0339 (78385) (PART OF KIT, FSN 4310-115-2475)	EA	1									9	20
X1		GASKET: CYLINDER, FIRST STAGE 437-0338 (78385) (PART OF KIT, FSN 4310-115-2475)	EA	1									9	21
X1		RING, RETAINING: PISTON PIN MS16625-4037 (96906) (PART OF KIT, FSN 4310-115-2475)	EA	2									9	22
X1		PIN, WRIST: PISTON 3800148 (78385) (PART OF KIT, FSN 4310-115-2475)	EA	1									9	23

(1) SMR CODE	(2) FEDERAL STOCK NUMBER	(3) DESCRIPTION REF. NUMBER & MFR CODE USABLE ON CODE	(4) UNIT OF MEAS	(5) QTY INC IN UNIT	(6) 30-DAY DS MAINT ALLOWANCE			(7) 30-DAY GS MAINT ALLOWANCE			(8) 1-YR ALW PER 100 EQUIP CNTGCT	(9) DEPOT MAINT ALW PER 100 EQUIP	(10) ILLUSTRATION	
					(a)	(b)	(c)	(a)	(b)	(c)			(a)	(b)
					1-20	21-50	51-100	1-20	21-50	51-100			FIG NO.	ITEM NO.
X1		PISTON ASSEMBLY: FIRST STAGE 4419-045 (78385)	EA	1									9	24
X1		(PART OF KIT, FSN 4310-115-2475) RING, PISTON: COMPRESSION 1119-0147 (78385)	EA	1									9	25
X1		RING, PISTON: RIDER 419-01 46 (78385)	EA	1									9	26
X1		PISTON 419-0143 (78385)	EA	1									9	27
X1		STRAINER AND RELIEF VALVE ASSEMBLY 26079 (78385) (PART OF KIT, P/N 41459-0114 (78385))	EA	1									10	1
P F	4730-277-5083	NUT AN6289D6 (88044)	EA	1	REF	REF	REF	REF	REF	REF	REF	REF	10	2
X1		RING, GASKET MS28777-6 (96906) (PART OF KIT, P/N 4459-0114 (78385))	EA	1									10	3
X1		GASKET 13QA0457 (78385) (PART OF KIT, P/N 4459-0114 (78385))	EA	1									10	4
P F	4310-11470-6358	CAP AND RUPTURE DISC ASSEMBLY: THIRD STAGE 4408-0089 (78385)	EA	1	*	*	*	*	*	*	5	10	10	5
X1		RETAINER, DISC RING 130B2746 (78385) (PART OF KIT, FSN 4310-574-7708)	EA	1									10	6
X1		RING, DISC 270251 (78385) (PART OF KIT, FSN 1310-571-7708)	EA	1									10	7
X1		DISC, RUPTURE 2741031 (78385) (PART OF KIT, FSN 4310-574-7708)	EA	1									10	8
X1		CAP, CYLINDER: THIRD STAGE 3800178 (78385)	EA	1									10	9
X1		SPRING, EXHAUST VALVE: THIRD STAGE 3800196 (78385) (PART OF KIT, FSN 4310-574-7703)	EA	1									10	10
X1		VALVE, EXHAUST: THIRD STAGE 3800195 (78385) (PART OF KIT, FSN 4310-574-7703)	EA	1									10	11
X1		NUT, CYLINDER 50NFK20 (56878) (PART OF KIT, FSN 1310-115-390)	EA	41									10	12
X1		CYLINDER AND SLEEVE ASSEMBLY 4121-00422 (78385) (PART OF KIT, FSN 4310-115-3980)	EA	1									10	13
X1		SEAL, REDUCER 130B1136 (78385) (PART OF KIT, FSN 4310-115-3980)	EA	1									10	14
P F	4730-08&88520	REDUCER 3750231 (78385)	EA	1	*	*	*	*	*	*	3	5	10	15
X1		GASKET: THIRD STAGE CYLINDER 260162 (78385) (PART OF KIT, FSN 4310-115-3980)	EA	1									10	16
X1	GASKET: THIRD	STAGE CYLINDER 260163 (78385) (PART OF KIT, FSN 4310-115-3980)	EA	1									10	17

(1) SMR CODE	(2) FEDERAL STOCK NUMBER	(3) DESCRIPTION REF. NUMBER & MFR CODE USABLE ON CODE	(4) UNIT OF MEAS	(5) QTY INC IN UNIT	(6) 30-DAY DS MAINT ALLOWANCE			(7) 30-DAY GS MAINT ALLOWANCE			(8) 1-YR ALW PER 100 EQUIP CNTGCT	(9) DEPOT MAINT ALW PER 100 EQUIP	(10) ILLUSTRATION	
					(a)	(b)	(c)	(a)	(b)	(c)			(a)	(b)
					1-20	21-50	51-100	1-20	21-50	51-100			FIG NO.	ITEM NO.
X1		GASKET: THIRD STAGE CYLINDER 260162 (78385) PART OF KIT, FSN 4310-115-3980)	EA	1									10	18
X1		PIN, COTTER AN381 -2-10 (8044, (PART OF KIT, FSN 4310-115-3980)	EA	1									10	19
X1		PIN, WRIST: PISTON 3260130 (78385) (PART OF KIT, FSN 4310-115-3980)	EA	1									10	20
X1		WASHER, LINK 3260133 (78385) (PART OF KIT, FSN 4310-115-3980)	EA	1									10	21
X1		BEARING, NEEDLE 08279 (60380) (PART OF KIT, FSN 4310-115-3980)	EA	25									10	22
X1		WASHER, LINK 3260133 (78385) (PART OF KIT, FSN 4310-115-3980)	EA	1									10	23
X1		PISTON ASSEMBLY: THIRD STAGE 4419-0047 (78385) (PART OF KIT, FSN 4310-115-3980)	EA	1									10	24
X1		STRAINER AND RELIEF VALVE ASSEMBLY 3260169 (78385) (PART OF KIT, FSN 4310-226-1103)	EA	1									10	25
P F	4730-277-5083	NUT AN628906 (88044)	EA	1	REF	REF	REF	REF	REF	REF	REF	REF	10	26
X1		RING, GASKET MS287776 (96906) (PART OF KIT, FSN 4310-226-1103)	EA	1									10	27
X1		GASKET 13A0A0457 (78385) (PART OF KIT, FSN 4310-226-1103)	EA	1									10	28
P F	1040-921-5294	CAP AND RUPTURE DISC ASSEMBLY: SECOND STAGE 4408-0054 (78385)	EA	1	*	*	*	*	*	*	5	10	10	29
X1		SCREW, DISC 448-0491 (78385)	EA	1									10	30
X1		RING, RETAINER: DISC 448-0487 (78385)	EA	1									10	31
X1		DISC, RUPTURE D494 (06370)	EA	1									10	32
X1		CAP, CYLINDER: SECOND STAGE 408-0165 (78385)	EA	1									10	33
X1		PACKING, PREFORMED 437-0278 (78385) (PART OF KITS, FSN 4310-433-2990 AND 4310-115-3979)	EA	1									10	34
P D	5310-999-0478	WASHER, SPRING: SECOND STAGE 448-0483 (78385)	EA	1							5	20	10	35
X1		SPRING, VALVE: SECOND STAGE 425-0124 (78385) (PART OF KIT, FSN 4310-433-2990)	EA	1									10	36
X1		VALVE, EXHAUST: SECOND STAGE 465-0118 (78385) (PART OF KIT, FSN 4310-433-2990)	EA	1									10	37
X1		NUT, CYLINDER 50FK420 (56878) (PART OF KIT, FSN 4310-115-3979)	EA	4									10	38
X1		CYLINDER: SECOND STAGE 421-0069 (78385) (PART OF KIT, FSN 4110-11-3979)	EA	1									10	39

(1) SMR CODE	(2) FEDERAL STOCK NUMBER	(3) DESCRIPTION REF. NUMBER & MFR CODE USABLE ON CODE	(4) UNIT OF MEAS	(5) QTY INC IN UNIT	(6) 30-DAY DS MAINT ALLOWANCE			(7) 30-DAY GS MAINT ALLOWANCE			(8) 1-YR ALW PER 100 EQUIP CNTGCY	(9) DEPOT MAINT ALW PER 100 EQUIP	(10) ILLUSTRATION	
					(a)	(b)	(c)	(a)	(b)	(c)			(a)	(b)
					1-20	21-50	51-100	1-20	21-50	51-100			FIG NO.	ITEM NO.
X1		GASKET: SECOND STAGE CYLINDER 3260162 (78385) (PART OF KIT, FSN 4310-115-3979)	EA	1									10	40
X1		GASKET: SECOND STAGE CYLINDER 3260163 (78385) (PART OF KIT, FSN 4310-115-3979)	EA	1									10	41
X1		GASKET: SECOND STAGE CYLINDER 3260162 (78385) (PART OF KIT, FSN 4310-115-3979)	EA	1									10	42
X1		PIN, COTTER AN381-2-10 (88044) (PART OF KIT, FSN 4310-115-3979)	EA	1									10	43
X1		PIN, WRIST: PISTON 3260130 (78385) (PART OF KIT, FSN 4310-115-3979)	EA	1									10	44
X1		WASHER, LINK 3260133 (78385) (PART OF KIT, FSN 4310-115-3979)	EA	1									10	45
X1		BEARING, NEEDLE 08279 (60380) (PART OF KIT, FSN 4310-115-3979)	EA	25									10	46
X1		WASHER, LINK 3260133 (78385) (PART OF KIT, FSN 4310-115-3979)	EA	1									10	47
X1		PISTON ASSEMBLY: SECOND STAGE 4419-00o46 (78385) (PART OF KIT, FSN 4310-115-3979)	EA	1									10	48
P F		VALVE ASSEMBLY, RELIEF 2880100-3 (78385)	EA	1	*	*	1	*	*	1	6	10	11	1
P F		TUBE ASSEMBLY, CRANKCASE VENT 4428-0343 (78385)	EA	1	*	*	*	*	*	*	5	10	11	2
		P F 4730-331-4950 ELBOW MS20822-4C (96906)	EA	1	REF	REF	REF	REF	REF	REF	REF	REF	11	3
X2F		BUSHING, PIPE 628-0091 (78385)	EA	1									11	4
P F	1450-887-4615	STUD: CYLINDERS AND END BELL 130A0967 (78385)	EA	18	*	*	*	*	*	*	5	10	11	5
P O		PLUG, DIPSTICK 4432-0007 (78385)	EA	1	*	*	*	*	5	*	*	5	11	6
P F	1010-921-5295	PLUG SIGHT 628-0041 (78385)	EA	1	*	*	*	*	*	*	3	5	11	7
X2F		TEE, RESERVOIR 4128-0491 (78385)	EA	1									11	8
X2F		NIPPLE, PIPE MS51953-97 (96906)	EA	1									11	9
P O		COCK DRAIN: RESERVOIR 428-0503 (78385)	EA	1	*	*	*	*	*	*	5	5	11	10
P D		SCREW, MACHINE: RESERVOIR MTG LP35225-64 (03038)	EA	14							2	10	11	11
P D		RESERVOIR, OIL 457-0010 (78385)	EA	1							2	2	11	12
X1		GASKET, OIL RESERVOIR 3260267 (78385) (PART OF KIT, P/N 4459-0134 (78385))	EA	1									11	13
X1		PIN 448-0547 (78385) (PART OF KIT, P/N 4459-0154 (78385))	EA	1									11	14

(1) SMR CODE	(2) FEDERAL STOCK NUMBER	(3) DESCRIPTION REF. NUMBER & MFR CODE USABLE ON CODE	(4) UNIT OF MEAS	(5) QTY INC IN UNIT	(6) 30-DAY DS MAINT ALLOWANCE			(7) 30-DAY GS MAINT ALLOWANCE			(8) 1-YR ALW PER 100 EQUIP CNTGCT	(9) DEPOT MAINT ALW PER 100 EQUIP	(10) ILLUSTRATION	
					(a)	(b)	(c)	(a)	(b)	(c)			(a)	(b)
					1-20	21-50	51-100	1-20	21-50	51-100			FIG NO.	ITEM NO.
X1		SCREW, MACHINE: RETAINER MTG AN501 A1 0-5 (88044) (PART OF KIT, P/N 4459-0154 (78385))	EA	2									11	15
X1		RETAINER, CYLINDER 448-0551 (78385) (PART OF KIT, P/N 4459-0154 (78385))	EA	1									11	16
X1		CYLINDER, OIL PUMP 421-0071 (78385) (PART OF KIT, P/N 4459-0154 (78385))	EA	1									11	17
X1		RETAINER, PISTON 3260266 (78385) PART OF KIT, P/N 4459-0154 (78385))	EA	1									11	18
X1		SHIM, OIL PUMP 3260265 (78385) (PART OF KIT, P/N 4459-0154 (78385))	EA	2									11	19
X1		PISTON ASSEMBLY: OIL PUMP 4419-0054 (78385) (PART OF KIT, P/N 4459-01541 (78385))	EA	1									11	20
X1		BALL, METAL MS9461-06 (96906) (PART OF KIT, P/N 4459-0154 (78385))	EA	1									11	21
X1		RETAINER, BALL 448-0480 (78385) (PART OF KIT, P/N 4459-0151 (78385))	EA	1									11	22
X1		SOCKET, MASTER ROD 3260556 (78385) (PART OF KIT, P/N 4459-0154 (78385))	EA	1									11	23
P F	5310-550-9449	NUT, END BELL 50FK420 (56878)	EA	6	*	*	*	*	*	*	2	10	11	24
P F		END BELL 4408-0093 (78385)	EA	1	*	*	*	*	*	*	3	5	11	25
X1		INSERT, END BELL 3260187 (78385)	EA	1									11	26
P F	4310-433-2987	GASKET, END BELL 3260188 (78385)	EA	2	*	1	2	*	1	2	20	100	11	27
P F	3895-915-2263	SEAL, OIL 9261 (80201)	EA	1	*	1	2	*	1	2	20	100	11	28
P D	3110-100-2394	BEARING, BALL Q3L05X3A (43334)	EA	1							5	25	11	29
P F	5330-291-2337	SEAL, OIL 10527 (80201)	EA	1	*	1	2	*	1	2	20	100	11	30
P D	3110-144-9009	BEARING, BALL: CRANKSHAFT Q3L06X3A (43334)	EA	1							5	25	11	31
P D	5315-788-5372	PIN, RETAINER PLATE 3260168 (78385)	EA	1							6	10	11	32
X2D		PLATE, RETAINER 3260127 (78385)	EA	1									11	33
P D	5365-450-4115	BUSHING, DRIVE 414-0216 (78385)	EA	1							10	20	11	34
P D	3120-993-0093	WASHER, THRUST 3260125 (78385)	EA	1							5	5	11	35
P D	5315-234-1856	PIN, COTTER MS24665-144 (96906)	EA	2							2	10	11	36
P D		PIN, WRIST: LINK TO ROD 3260130 (78385)	EA	2							5	10	11	37
P D		WASHER, LINK 3260133 (78385)	EA	1							2	10	11	38

(1) SMR CODE	(2) FEDERAL STOCK NUMBER	(3) DESCRIPTION REF. NUMBER & MFR CODE USABLE ON CODE	(4) UNIT OF MEAS	(5) QTY INC IN UNIT	(6) 30-DAY DS MAINT ALLOWANCE			(7) 30-DAY GS MAINT ALLOWANCE			(8) 1-YR ALW PER 100 EQUIP CNTGCT	(9) DEPOT MAINT ALW PER 100 EQUIP	(10) ILLUSTRATION	
					(a)	(b)	(c)	(a)	(b)	(c)			(a)	(b)
					1-20	21-50	51-100	1-20	21-50	51-100			FIG NO.	ITEM NO.
		1 -CYLINDER, 421-0069 (78385)											10	39
		1 -GASKET, 3260162 (78385)											10	40
		1-GASKET, 3260163 (78385)											10	41
		1-GASKET, 3260162 (78385)											10	42
		1-PIN, AN381-2-10 (88044)											10	43
		1-PIN, 3260130 (78385)											10	44
		1-WASHER, 3260133 (78385)											10	45
		2-BEARING, Q279 (60380)											10	46
		1-WASHER, 3260133 (78385)											10	47
		1-PISTON ASSEMBLY, 4419-0046 (78385)											10	48
P D	4310-115-3980	KIT, REPAIR: CYLINDER AND PISTON, THIRD STAGE 44159-0143 (78385)	EA	1									20	100
		1-GASKET, 130A0457 (78358)											8	23
		1-RING, MS28777-6 (96906)											8	24
		4-NUT, 50FK420 (56878)											10	12
		1-CYLINDER AND SLEEVE ASSEMBLY, 4421-0042 (78385)											10	13
		1-SEAL, 130B1136 (78385)											10	14
		1-GASKET, 3260162 (78385)											10	16
		1-GASKET, 3260163 (78385)											10	17
		1-GASKET, 320162 (78385)											10	18
		1-PIN, AN381-2-10 (88044)											10	19
		1-PIN, 3260130 (78385)											10	20
		1-WASHER, 3260133 (78385)											10	21
		25-BEARING 08279 (60380)											10	22
		1-WASHER, 3260133 (78385)											10	23
		1-PISTON ASSEMBLY, 4419-0047 (78385)											10	2

(1) SMR CODE	(2) FEDERAL STOCK NUMBER	(3) DESCRIPTION REF. NUMBER & MFR CODE USABLE ON CODE	(4) UNIT OF MEAS	(5) QTY INC IN UNIT	(6) 30-DAY DS MAINT ALLOWANCE			(7) 30-DAY GS MAINT ALLOWANCE			(8) 1-YR ALW PER 100 EQUIP CNTGCY	(9) DEPOT MAINT ALW PER 100 EQUIP	(10) ILLUSTRATION		
					(a)	(b)	(c)	(a)	(b)	(c)			(a)	(b)	
					1-20	21-50	51-100	1-20	21-50	51-100			FIG NO.	ITEM NO.	
P D		BEARING, NEEDLE Q8279 (60380)	EA	25							100	500	11	39	
P D		WASHER, LINK 3260133 (78385)	EA	1							REF	REF	11	40	
P D	4310-069-8222	LINK, CONNECTING: SECOND STAGE 3260128 (78385)	EA	1							5	5	11	41	
P D		WASHER, LINK 3260133 (78385)	EA	1							REF	REF	11	42	
P D		BEARING, NEEDLE 08279 (60380)	EA	25							REF	REF	11	43	
P D		WASHER, LINK 3260133 (78385)	EA	1							REF	REF	11	44	
P D	4310-069-8224	LINK, CONNECTING: THIRD STAGE 3260129 (78385)	EA	1							5	5	11	45	
P D	4310-470-6356	MASTER ROD ASSEMBLY 4417-0015 (78385)	EA	1							5	10	11	46	
P D	3110-902-2699	BEARING, NEEDLE GB68 (60380)	EA	2							10	100	11	47	
P D	3110-465-9316	BEARING, NEEDLE HK4520H (21335)	EA	1							10	30	11	48	
X1		ROD, MASTER 417-0074 (78385)	EA	1									11	49	
P D	431 0-460-6637	CRANKSHAFT 412-0103 (78385)	EA	1							5	5	11	50	
X2D		CRANKCASE 4410-0257 (78385)	EA	1									11	51	
X1		INSERT, CRANKCASE 3260122 (78385)	EA	1									11	52	
		GROUP 07 - REPAIR KITS													
P H	4310-097-9832	KIT, REPAIR: FILTER AND SEPARATOR 4459-0105 (78385)	EA	1							1	2	3	40	100
		1-SCREW AND PLUG ASSEMBLY, 130B0487 (78385)												2	6
		1-WASHER, 130A1581 (78385)												2	7
		1-ELEMENT, 130B1759 (78385)												2	8
		1-GASKET, 130A1580 (78385)												2	9
		1-O RING, 48A113 (78385)												2	10
P D	4310-115-3979	KIT, REPAIR: CYLINDER AND PISTON, SECOND STAGE 4459-0142 (78385)	EA	1										20	100
		1-GASKET, 130A0457 (78385)												8	15
		1-RING, MS28777-6 (96906)												8	16
		1-PACKING 437-0278 (78385)												10	34
		4-NUT, 50FK420 (56878)												10	38

(1) SMR CODE	(2) FEDERAL STOCK NUMBER	(3) DESCRIPTION REF. NUMBER & MFR CODE USABLE ON CODE	(4) UNIT OF MEAS	(5) QTY INC IN UNIT	(6) 30-DAY DS MAINT ALLOWANCE			(7) 30-DAY GS MAINT ALLOWANCE			(8) 1-YR ALW PER 100 EQUIP CNTGCT	(9) DEPOT MAINT ALW PER 100 EQUIP	(10) ILLUSTRATION	
					(a)	(b)	(c)	(a)	(b)	(c)			(a)	(b)
					1-20	21-50	51-100	1-20	21-50	51-100			FIG NO.	ITEM NO.
P D	4310-296-9254	KIT, REPAIR: VALVE, FIRST STAGE 4459-0107 (78385) 1-NUT MS20365D1032A (96906) 1-SCREW, 3260297 (78385) 1-GASKET, 3800138 (78385) 1-SPRING, 3260165 (78385) 1-VALVE, 3260164 (78385) 2-VALVE, 3260149 (78385) 1-SPRING, 3260148 (78385) 1-PACKING, 437-0279 (78385)	EA	1							20	100		
												9	5	
												9	7	
												9	8	
												9	9	
												9	10	
												9	12	
												9	13	
												9	15	
P D	4310-115-2475	KIT, REPAIR: CYLINDER AND PISTON, FIRST STAGE 4459-0141 (78385) 1-GASKET, 3800138 (78385) 4-NUT, 50FK420 (56878) 1-CYLINDER, 421-0068 (78385) 1-GASKET, 437-0338 (78385) 1-SHIM, 437-0339 (78385) 1-GASKET, 437-0338 (78385) 2-RING, MS16625-4037 (96906) 1-PIN 3800148 (78385) 1-PISTON ASSEMBLY, 4419-0045 (78385)	EA	1								15	100	
												9	8	
												9	17	
												9	18	
												9	19	
												9	20	
												9	21	
												9	22	
												9	23	
												9	24	
P F	4730-442-9822	KIT, REPAIR: STRAINER AND RELIEF VALVE 4459-0114 (78385) 1-STRAINER AND RELIEF VALVE ASSEMBLY, 3260179 (78385) 1-RING, MS28777-6 (96906) 1-GASKET, 130A0457 (78385)	EA	1	*	*	1	*	*	1	10	20		
												10	1	
												10	3	
												10	4	
P F	4310-574-7708	KIT, REPAIR: RUPTURE DISC 4459-0112 (78385) 1 -RETAINER, 130B2746 (78385)- 1-RING, 2740251 978385)	EA	1	*	1	2	*	1	2	20	10		
												10	6	
												10	7	

(1) SMR CODE	(2) FEDERAL STOCK NUMBER	(3) DESCRIPTION REF. NUMBER & MFR CODE USABLE ON CODE	(4) UNIT OF MEAS	(5) QTY INC IN UNIT	(6) 30-DAY DS MAINT ALLOWANCE			(7) 30-DAY GS MAINT ALLOWANCE			(8) 1-YR ALW PER 100 EQUIP CNTGCTY	(9) DEPOT MAINT ALW PER 100 EQUIP	(10) ILLUSTRATION	
					(a)	(b)	(c)	(a)	(b)	(c)			(a)	(b)
					1-20	21-50	51-100	1-20	21-50	51-100			FIG NO.	ITEM NO.
P D	4310-574-7703	1-DISC, 2741031 (78385)	EA	1									10	8
		KIT, REPAIR: VALVE, THIRD STAGE 4459-0111 (78385)											30	100
		1-SPRING, 3800196 (78385)											10	10
P F	4310-226-1103	1 -VALVE, 3800195 (78385)	EA	1	*	*	1	*	*	1	10	20	10	11
		KIT, REPAIR: STRAINER, SECOND STAGE 4459-0113 (78385)												
		1-STRAINER AND RELIEF VALVE ASSEMBLY, 3260169 (78385)											10	25
P D	4310-433-2990	1-RING, MS28777-6 (96906)	EA	1									10	27
		1-GASKET, 130A0457 (78385)										10	28	
		KIT, REPAIR: VALVE SECOND STAGE 4459-0129 (78385)										30	100	
P D		1 -PACKING, 437-0278	EA	1									10	32
		1-SPRING, 425-0124 (78385)										10	34	
		1-VALVE, 465-0118 (78385)										10	35	
		KIT, REPAIR: OIL PUMP 4459-0154 (78385)										15	100	
		1-GASKET, 3260267 (78385)										11	13	
		1-PIN, 448-0547 (78385)										11	14	
		2-SCREW, AN501 A10-5 (88044)										11	15	
		1-RETAINER 448-0554 (78385)										11	16	
		1-CYLINDER, 421-0071 (78385)										11	17	
		1 -RETAINER 3260266 (78385)										11	18	
		1-SHIM, 3260265 (78385)										11	19	
		1-PISTON ASSEMBLY, 4419-0054 (78385)										11	20	
		1 -BALL, MS9461-06 (96906)										11	21	
1-RETAINER, 448-0480 (78385)								11	22					
1-SOCKET, 3260556 (78385)								11	23					

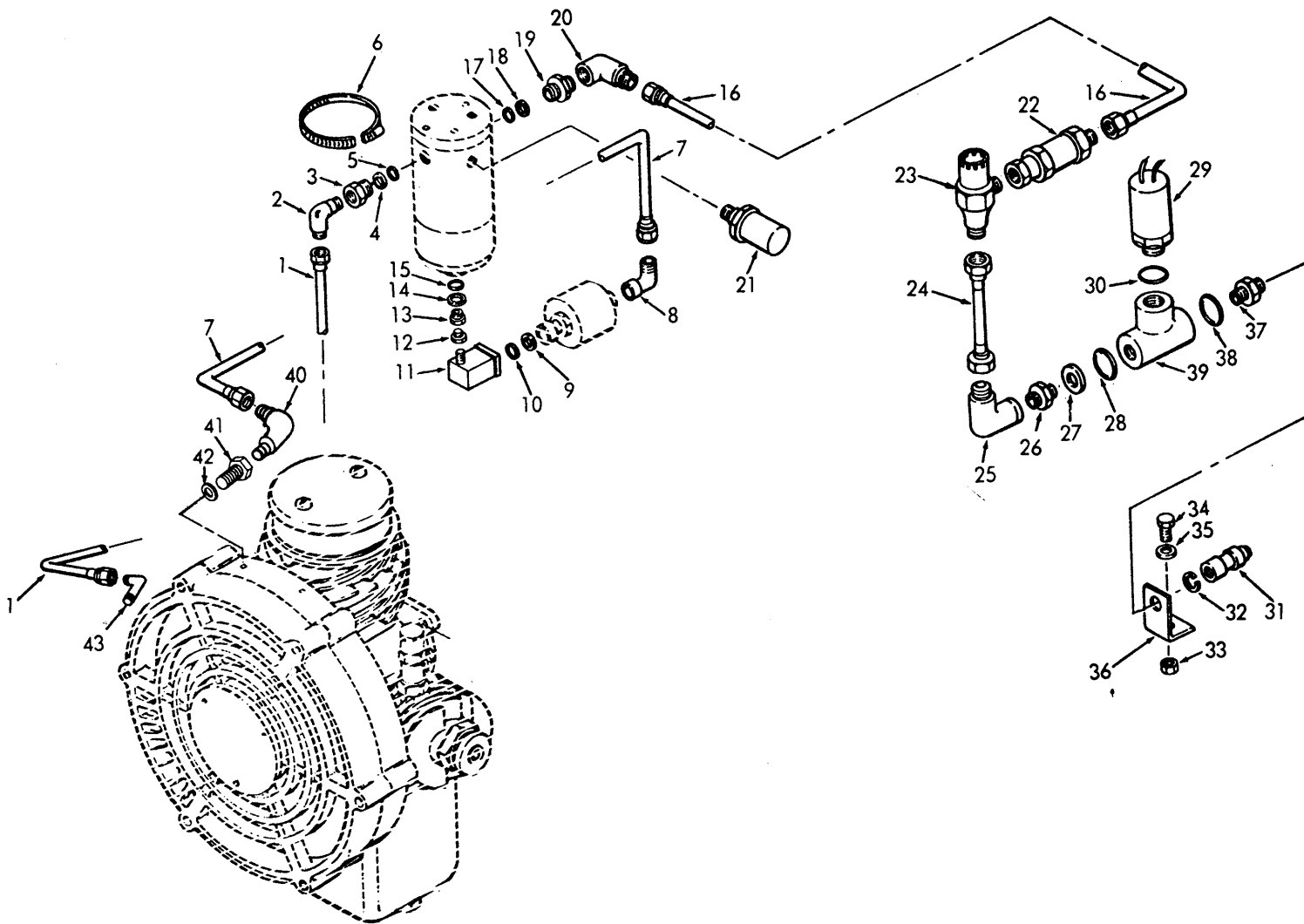
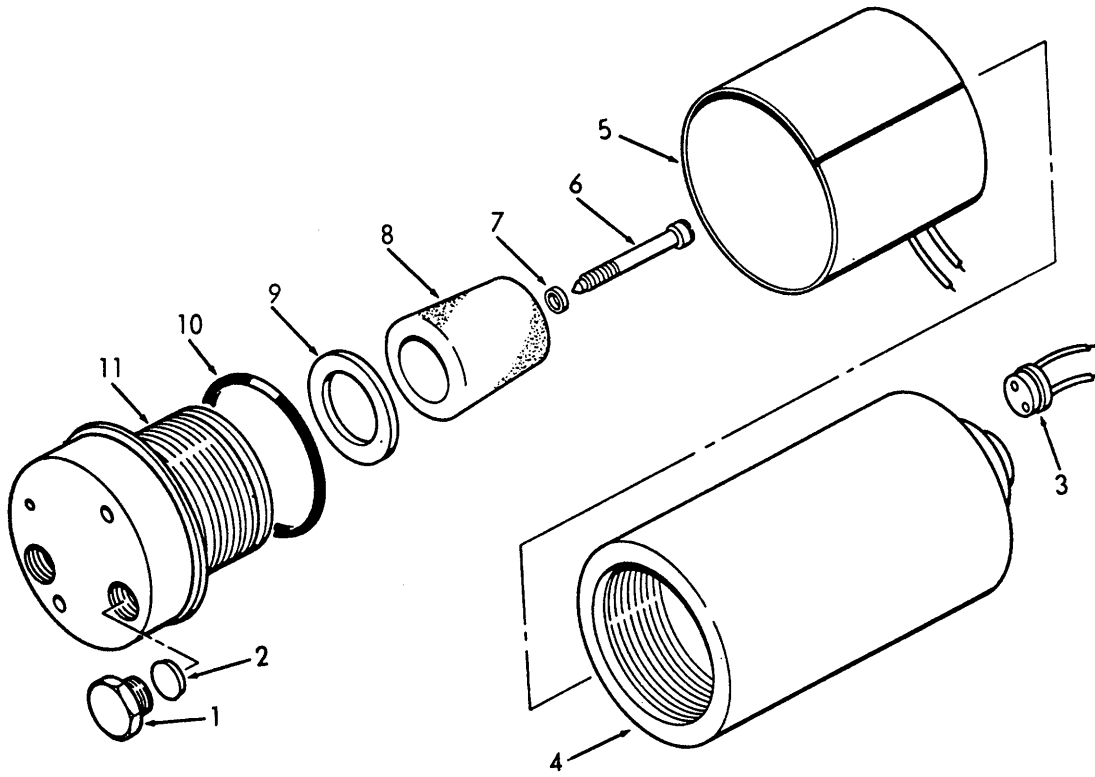


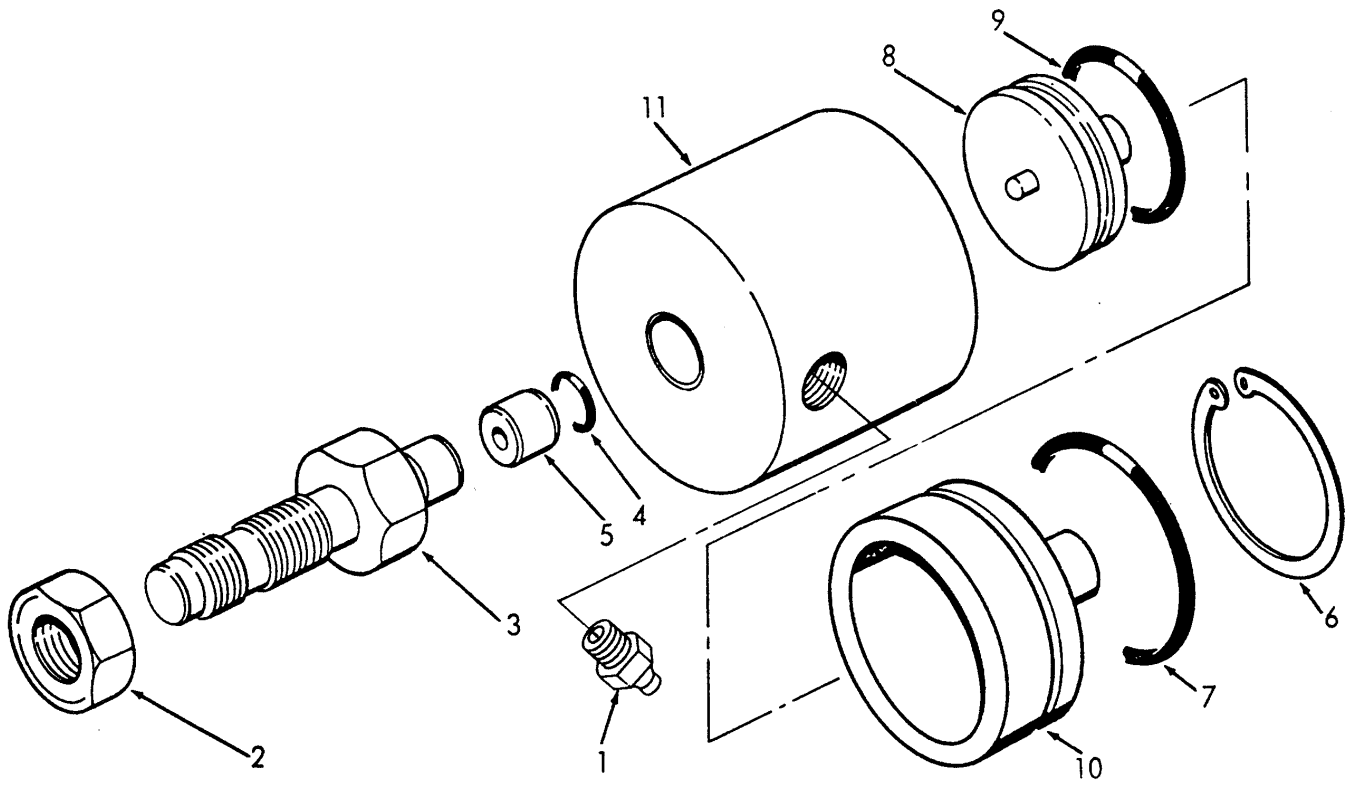
Figure 1. Air lines and fittings.

ME 4310-344.34P/1



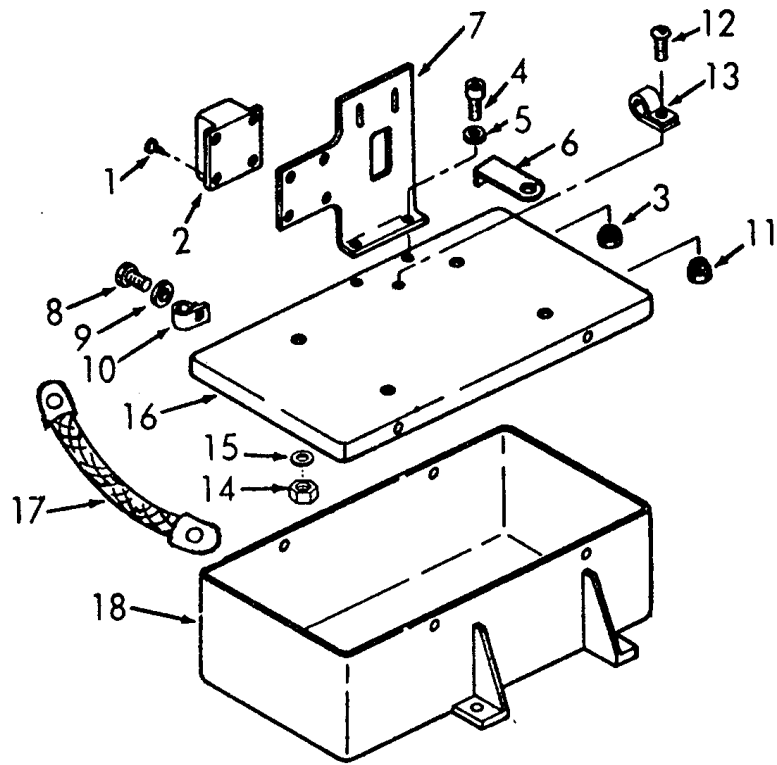
ME 4310-344-34P/2

Figure 2. Moisture separator



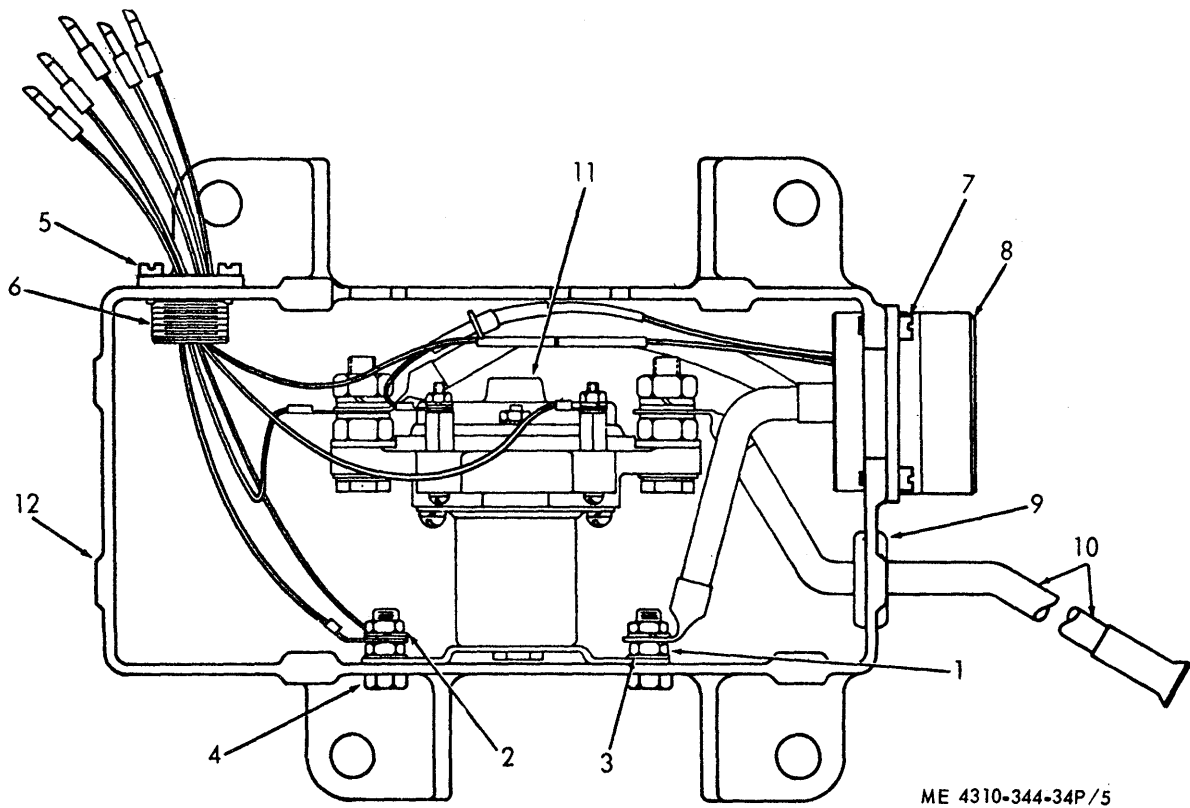
ME 4310-344.34P/3

Figure 3. Dump valve



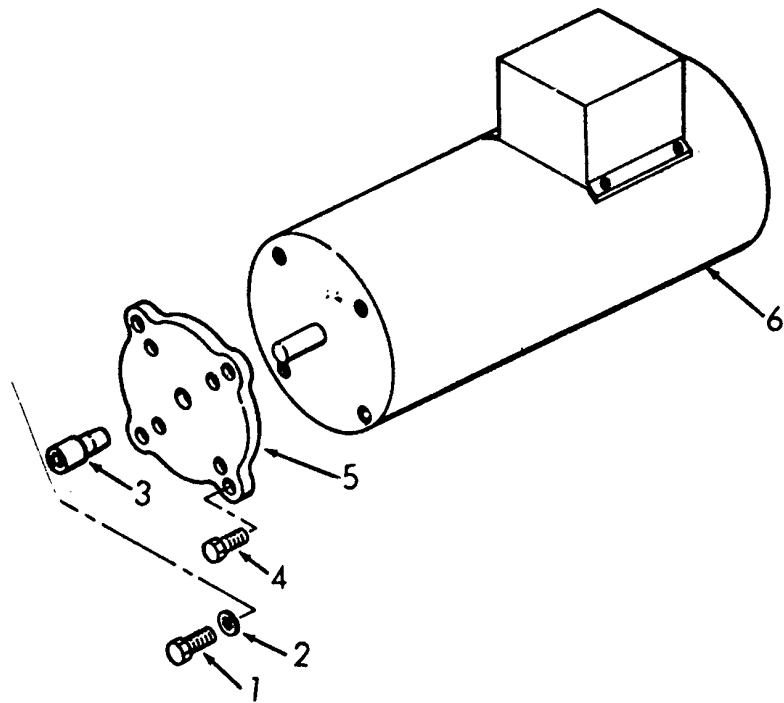
ME 4310-344-34P/4

Figure 4. Control box and timer.



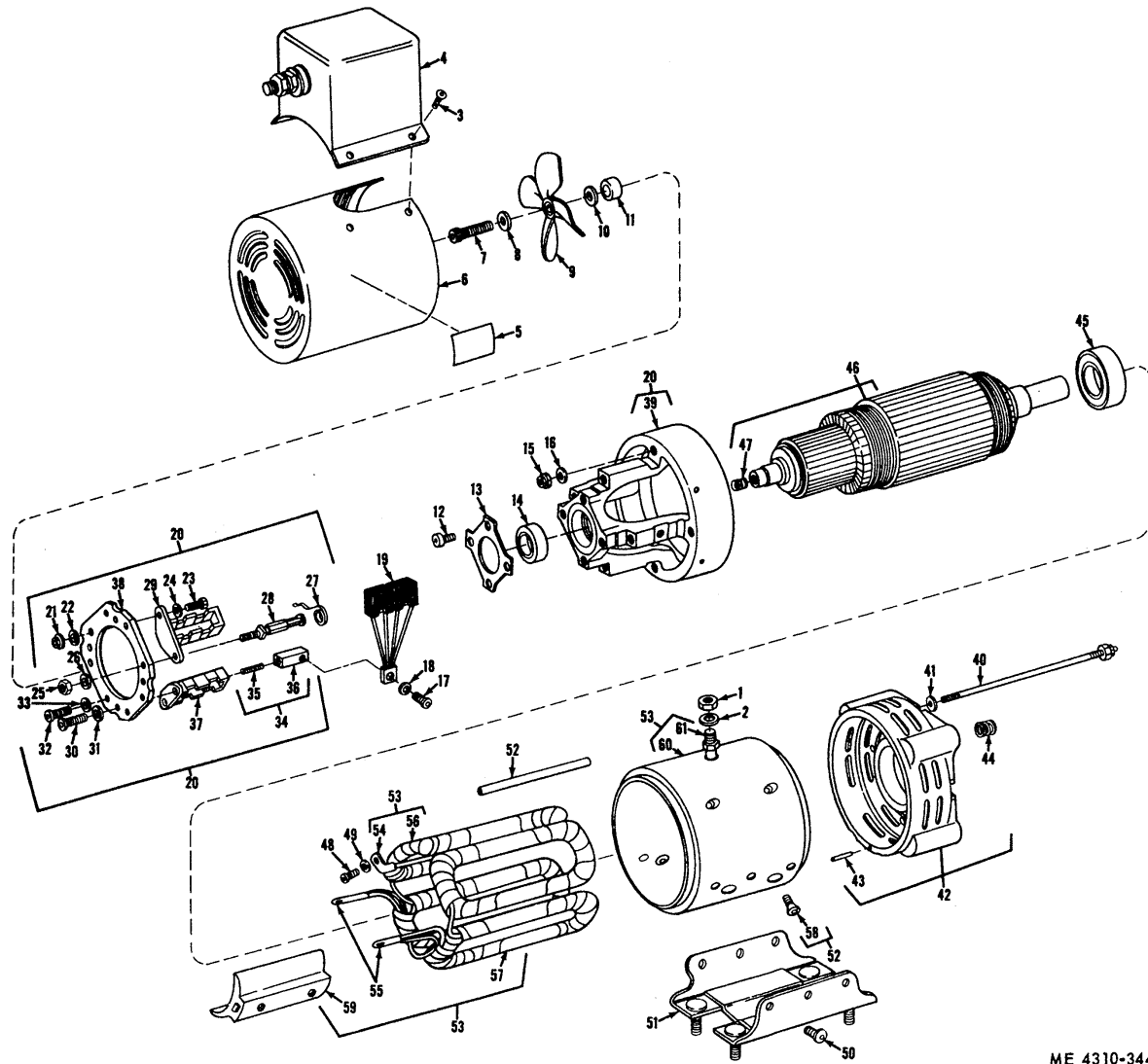
ME 4310-344-34P/5

Figure 5. Control box components.



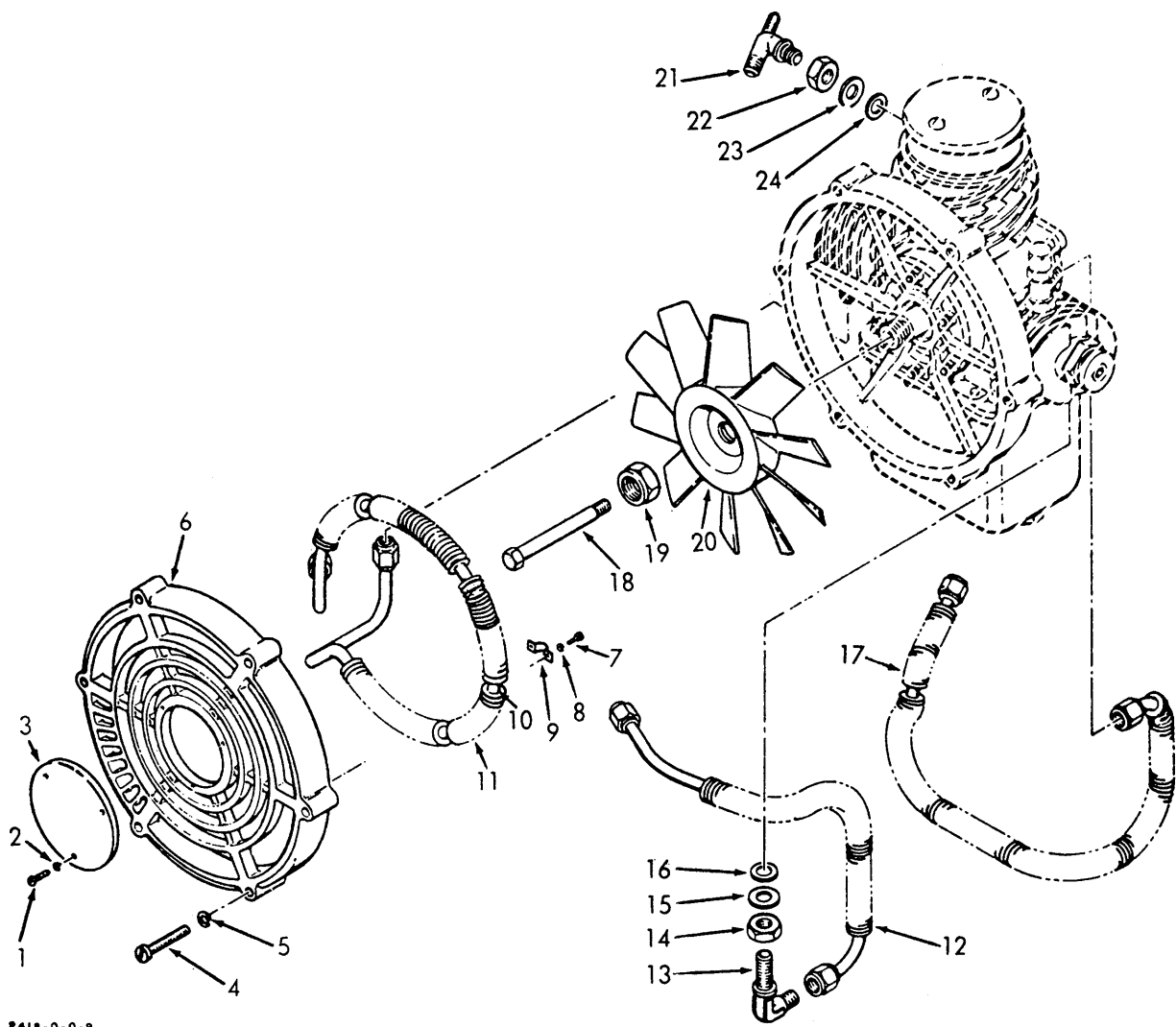
ME 4310-344-34P/6

Figure 6. Electric motor.



ME 4310-344-34P/7

Figure 7. Electric motor components.



2418-0-0-9

ME 4310.344-34P/8

Figure 8. Aftercooler and guard.

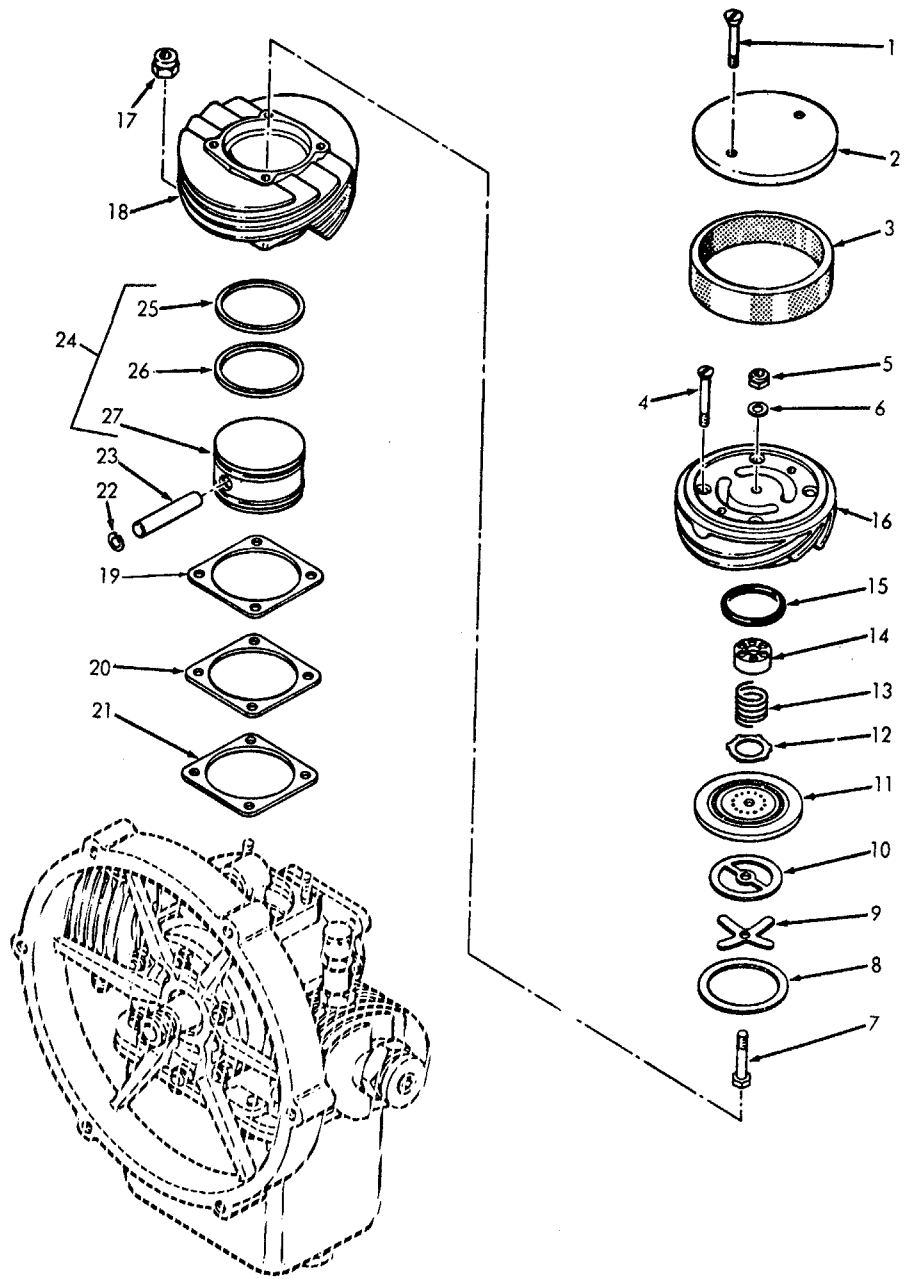
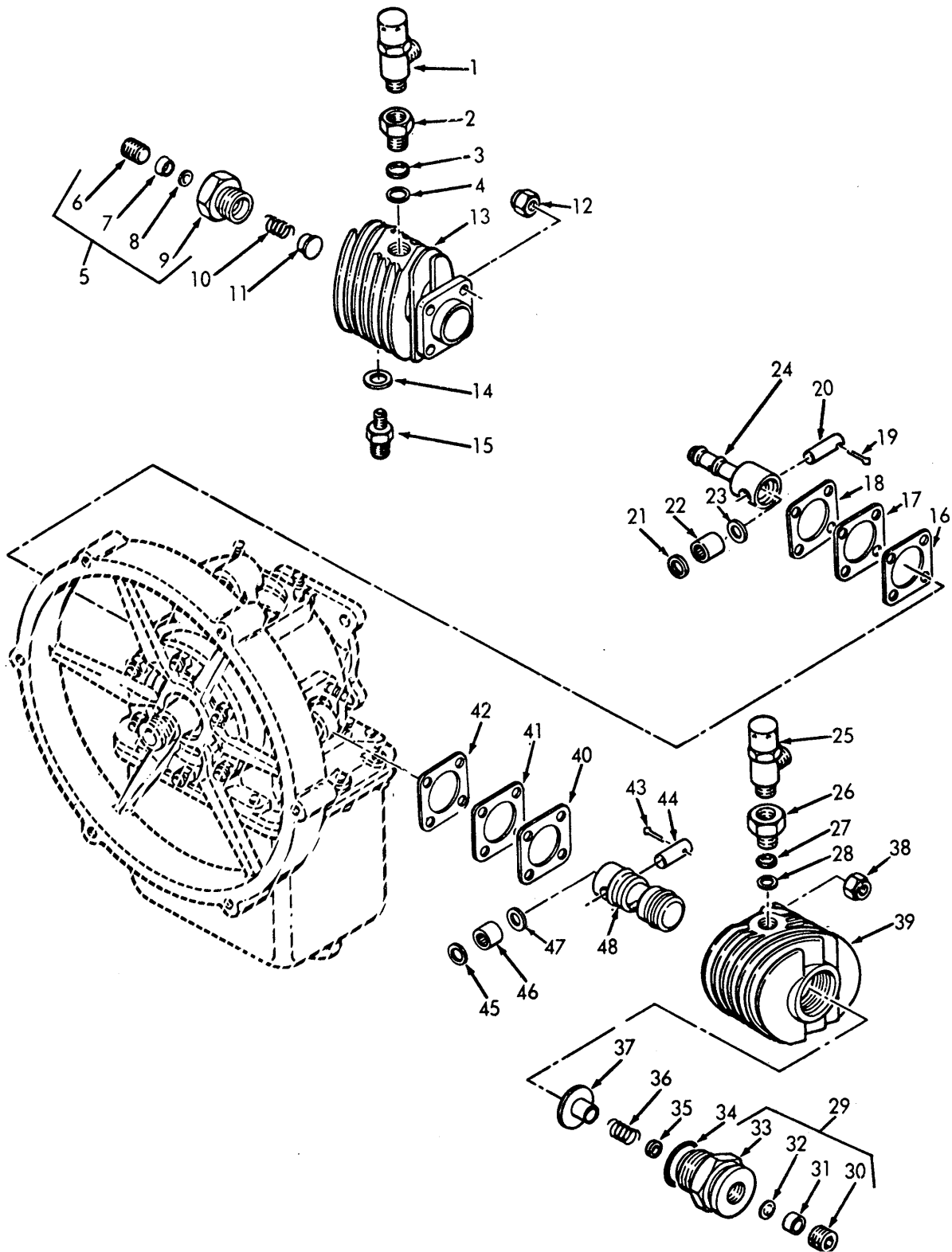


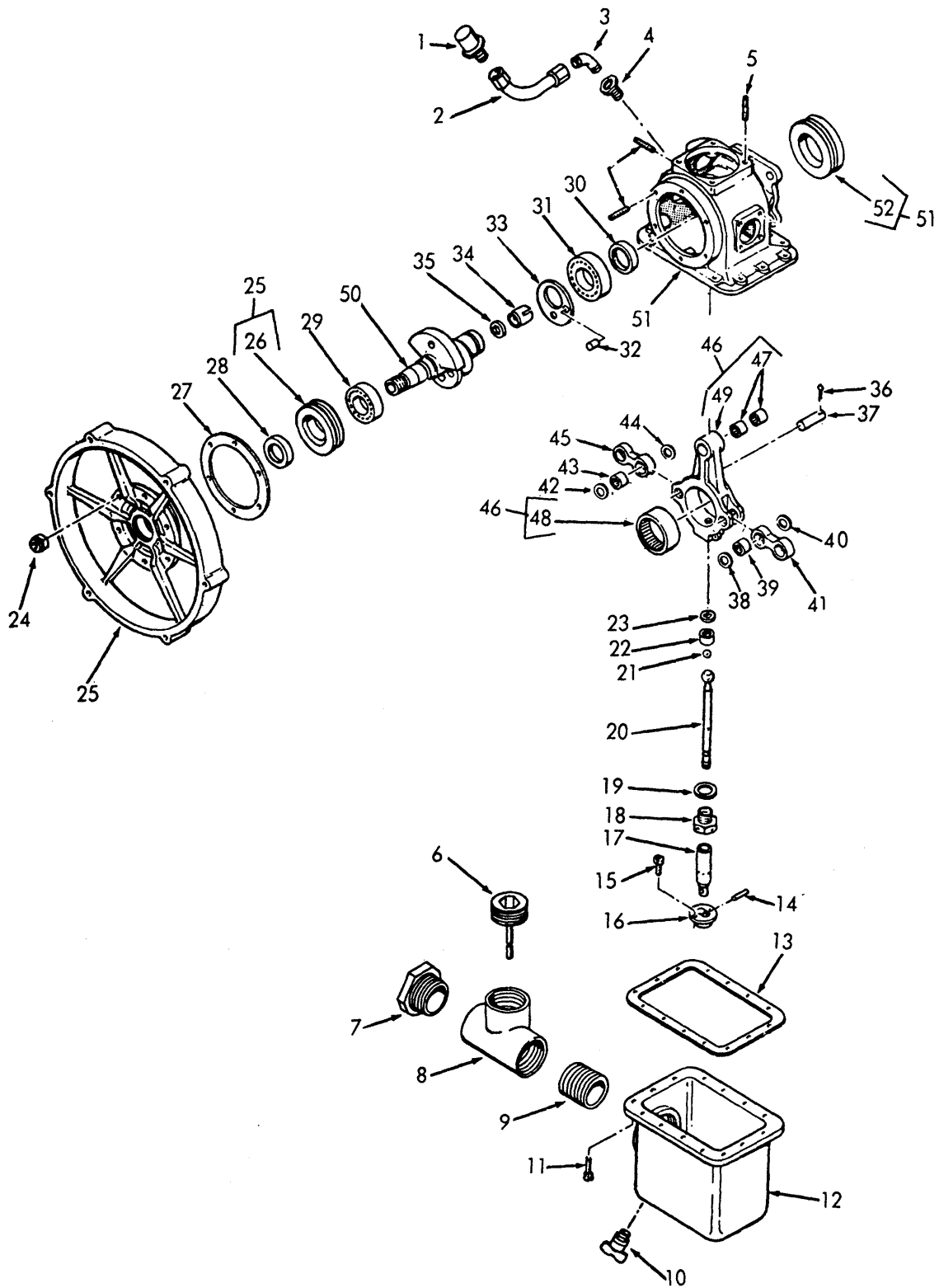
Figure 9. First stage cylinder, piston and valve.

ME 4310.344.34P/9



ME 4310-344-34P/10

Figure 10. Second and third stage cylinder.



ME 4310-344-34P/11

Figure 11. Crankshaft and oil pump components,

**Section IV. INDEX-FEDERAL STOCK NUMBER AND REFERENCE NUMBER
CROSS-REFERENCE TO FIGURE AND ITEM NUMBER**

<u>Stock Number</u>	<u>Figure No.</u>	<u>Item No.</u>	<u>Stock Number</u>	<u>Figure No.</u>	<u>Item No.</u>
1040-784-7455	8	17	5310-141-1795	4	9
1040-921-5294	10	29	5310-167-0671	7	2
1040-921-5295	11	7	5310-167-0818	1	35
1270-830-2836	2	2		4	5
1450-887-4615	11	5	5310-167-0820	4	15
1450-887-4634	2		5310-183-4406	9	6
1650-600-4383	1	12	5310-208-7589	5	1
3110-100-2394	11	29	5310-209-0786	5	3
3110-144-9009	11	31	5310-261-8278	7	18
3110-465-9316	11	53		7	49
3110-902-2699	11	47	5310-514-6674	6	2
3120-993-0093	11	35	5310-515-8058	7	16
3895-915-2263	11	2		7	41
4310-069-8222	11	41	5310-550-9449	11	24
4310-069-8224	11	45	5310-559-0070	8	2
4310-115-3977	9	3	5310-576-5752	8	5
4310-433-2987	11	27		8	8
4310-433-3012	2	5	5310-582-5965	5	2
4310-460-6637	11	0	5310-680-7296	7	22
4310-470-6356	11	6		7	24
4310-470-6358	10	5		7	26
4310-979-9283	9	16		7	31
4310-979-9288	9	11		7	33
4310-979-9294	9	14	5310-685-3228	1	32
4310-983-3071	8	6	5310-720-8811	7	1
4730-088-8520	10	15	5310-734-5759	1	37
4730-197-2916	8	13	5310-807-1469	1	33
4730-277-5083	8	14		4	3
	10	2		7	21
	10	26		7	25
4730-277-5084	8	22	5310-809-4058	7	8
4730-331-4950	1	8		7	0
	1	13	5310-902-6676	4	11
	1	40	5310-939-0783	8	19
	11	3	5310-962-4912	4	14
4730-580-7302	1	3	5310-999-0478	10	35
	1	19	5315-234-1856	11	3
	1	26	5315-788-5372	11	32
	1	41	5325-185-0004	5	9
	3	2	5330-186-4947	1	4
4730-698-4033	1	31		1	9
4730-698-4035	3	1		1	14
4730-722-7214	1	2		1	18
	1	20		1	27
	1	25		1	42
4730-990-9790	1	39	5330-291-2337	11	30
5305-058-0505	7	32	5330-579-7914	3	9
5305-145-7011	5	7	5330-579-8156	3	7
5305-273-4962	6	4	5330-805-2966	1	5
5305-514-7506	4	1		1	10
5305-558-4887	5	5		1	15
5305-558-7361	8	1		1	17
5305-614-0246	4	12		1	28
5305-680-0506	5	4		1	30
5305-771-4754	7	7		1	38
5305-810-4412	1	34		3	4
	4	4	5340-597-3302	7	35
5305-842-5646	8	4	5340-769-5311	8	9
	8	7	5340-803-5574	7	4
5305-889-3002	7	3	5340-829-2141	7	47
5305-954-3487	9	1	5365-449-5882	8	10
5305-983-6652	7	23	5365-450-4115	11	34
5305-984-6216	9	1	5930-015-0041	2	3
5305-995-2639	7	12	5940-050-6238	7	55
	7	17	5940-819-8246	7	54
	7	48	5945-660-9315	5	11
5305-999-4085	7	30	5970-770-5172	7	52
5306-225-9085	6	1	6105-242-2867	6	6
5306-754-1788	8	8			

**Section IV. INDEX-FEDERAL STOCK NUMBER AND REFERENCE NUMBER
CROSS-REFERENCE TO FIGURE AND ITEM NUMBER**

<u>Reference No.</u>	<u>Mfg Code</u>	<u>Fig No.</u>	<u>Item No.</u>	<u>Reference No.</u>	<u>Mfg Code</u>	<u>Fig No.</u>	<u>Item No.</u>
AN316-4R	88044	5	1	MS28778-4	96906	1	30
AN381-2-10	88044	10	19		96906	1	38
	88044	10	43		96906	3	4
AN500A6-4	88044	4	1	MS35190-271	96906	9	1
AN501210-5	88044	11	15	MS35206-242	96906	7	3
AN503-8-8	88044	5	7	MS35223-42	96906	8	1
AN515-10-24	88044	9	1	MS35265-14	96906	5	5
AN6289-6	88044	8	22	MS35265-69	96906	8	4
AN6289C4	88044	1	3		96906	8	7
	88044	1	13	MS35266-63	96906	4	12
	88044	1	19	MS35266-30	96906	6	1
	88044	1	26	MS35298-6	96906	5	4
	88044	1	41	MS35333-38	96906	8	2
	88044	3	2	MS35333-39	96906	8	5
AN6289D6	88044	8	14		96906	8	8
	88044	10	2	MS35333-43	96906	1	32
	88044	10	26	MS35335-33	96906	5	3
AN816-4C	88044	3	1	MS35335-34	96906	6	2
AN832-4J	88044	1	31	MS35338-100	96906	7	18
AN833-6D	88044	8	13		96906	7	49
AN924-46	88044	1	37	MS35338-102	96906	7	2
AN938C4	88044	1	39	MS35338-44	96906	5	2
AN960-10	88044	1	35	MS35446-2	96906	7	5
	88044	4	5	MS35448-3	96906	7	5
AN960-416	88044	4	9	MS35489-40	96906	5	9
AN960-516	88044	4	15	MS51953-97	96906	11	9
AN960-8	88044	7	16	MS9048-005	96906	7	43
	88044	7	41	MS9461-06	96906	11	21
AN960PD10	88044	9	6	NAS1351-3-10P	96906	7	32
D494	88044	10	32	NAS1351-3-14P	80205	7	30
EE281-2	77200	7	58	NAS1351-3-8P	80205	7	12
EE325-6	77200	7	59		80205	7	17
GB68	60380	11	47		80205	7	48
HK452OH	21335	11	48	NAS1351-4-20P	80205	7	7
LP352254	03038	11	11	NAS608-3H10P	80205	1	34
LP505-10-18	03038	9	4		80205	4	4
MS16625-1143	96906	3	6	NAS620-10L	80205	7	22
MS16625-4037	96906	9	22		80205	7	24
MS16698-29	96906	7	23		80205	7	26
MS20074-0405	96906	4	8		80205	7	31
MS20341-516A	96906	7	1		80205	7	33
MS20364-1032A	96906	4	11	PAB21-604	92003	7	43
MS20364-832C	96906	7	15	QS100M52S	08484	1	6
MS20365D1032A	96906	9	5	Q3L05X3A	43334	11	29
MS20822-4C	96906	1	8	Q3I06X3A	43334	11	31
	96906	1	40	Q8279	60380	10	22
	96906	11	3		60380	10	46
MS21045	96906	1	33		60380	11	39
	96906	4	3		60380	11	45
	96906	7	21	10527	80201	11	30
	96906	7	25	117B100-25	78385	1	21
MS21045	96906	4	14	122-7423	77200	7	42
MS21083N12	96906	8	19	122-7429	77200	7	6
MS21209C5-15	96906	7	44	122-7431	77200	7	60
M521209F1-15	96906	7	35	122-7433	77200	7	19
MS21209F4-15	96906	7	47	122-7437	77200	7	34
MS21919DG4	96906	4	13	127441-01	77200	7	40
MS24171D1	96906	5	11	122-7442	77200	7	46
MS24394C4	96906	1	2	122-7443	77200	7	20
	96906	1	20	122-7444	77200	7	53
	96906	1	25	122-7445	77200	7	56
MS2665-144	96906	11	36	122-7446	77200	7	57
Ms24677-49	96906	6	4	130A0457	78385	8	15
MS27183-10	96906	7	8		78385	8	23
	96906	7	10		78385	10	4
MS28775-212	96906	3	7		78385	10	28
MS28775-217	96906	3	9	130A0967	78385	11	5
MS28777-4	96906	1	4	130A1580	78385	2	9
	96906	1	9	130A1581	78385	2	7
	96906	1	14	130B0487	78385	2	5
	96906	1	18		78385	2	6
	96906	1	27	130B1136	78385	10	14
	96906	1	42	130B1759	78385	2	8
MS28777-6	96906	8	16	130B2746	78385	10	6
	96906	8	24	22-1364-21	72200	7	52
	96906	10	3	22-2760	77200	7	38
	96906	10	27	22:6476	77200	7	27
MS28778-4	96906	1	5	22-7419	77200	7	29
	96906	1	10		77200	7	37
	96906	1	15	22-7424	77200	7	51
	96906	1	17	22-7425	77200	7	39
	96906	1	27	22-7432	77200	7	13

**Section IV. INDEX-FEDERAL STOCK NUMBER AND REFERENCE NUMBER
CROSS-REFERENCE TO FIGURE AND ITEM NUMBER**

<u>Reference No.</u>	<u>Mfg Code</u>	<u>Fig No.</u>	<u>Item No.</u>	<u>Reference No.</u>	<u>Mfg Code</u>	<u>Fig No.</u>	<u>Item No.</u>
22-7434	77200	7	9	425-0124	78385	10	36
22-7435	77200	7	4	428-0491	78385	11	8
22-7436	77200	7	36	428-0493	78385	3	3
22-7438	77200	7	28	428-0499	78385	1	11
22-7439	77200	7	11	428-0503	78285	11	10
225344-100	77200	6	6	430-0117	78385	8	10
249A4TT	91816	1	22	437-0278	78385	10	34
2670100-8	78385	1	23	434-0310	8	3	
2670131	78385	1	12	437-0279	7835	9	15
2740251	78385	10	7	437-0338	78385	9	21
2741031	78385	2	2		78385	9	19
78385	10	8	437-0339	78385	9	20	
2880100-3	78385	11	1	4407-0093	78385	4	18
3260122	78385	11	52	4407-0094	78385	4	
3260125	78385	11	35	4408-0054	78385	10	29
3260127	78385	11	33	4408-0089	78385	10	5
3260128	78385	11	41	4408-0093	78385	11	25
3260129	78385	11	45	4410-0257	78385	11	51
3260130	78385	10	20	4410-0262	78385	8	
78385	10	44	4417-0015	78385	11	46	
78385	11	37	4419-0045	78385	9	24	
3260133	78385	10	21	4419-0046	78385	10	48
78385	10	23	4419-0047	78385	10	24	
78385	10	45	4419-0054	78385	11	20	
78385	10	47	4421-0042	78385	10	13	
78385	11	38	4428-0342	78385	8	21	
78385	11	40	4428-0343	78385	11	2	
78385	11	42	4428-0345	78385	1	16	
78385	11	44	4428-0346	78385	1	1	
3260146	78385	9	11	4428-0347	78385	1	7
326014	78385	9	14	4428-348	8	11	
326014	78385	9	13	4428-0349	78385	8	12
3260149	78385	9	12	4428-0495	78385	1	24
3260162	78385	10	16	4432-0007	78385	11	6
78385	10	18	4445-0223	78385	5	10	
78385	10	40	4445-0224	78385	5	8	
78385	10	42	4445-0225	78385	4	2	
3260163	78385	10	17	4445-0226	78385	4	17
78385	10	41	4445-0227	78385	1	29	
3260164	78385	9	10	4445-0229	78385	5	6
3260165	78385	9	9	4455-0021	78385	9	3
3260168	78385	11	32	4455-0027	78385	2	
3260169	78385	10	25	4465-0043	78385	3	
3260179	78385	10	1	448-0480	78385	11	22
3260185	78385	8	9	448-0483	78385	10	35
3260187	78385	11	26	448-0487	78335	10	31
3260188	78385	11	21	448-0491	78385	10	30
3260194	78385	8	6	448-0947	78	11	14
3260243	78385	8	17	448-0553	78385	8	18
3260265	78385	11	19	448-0554	78385	11	16
3260266	78385	11	18	457-0041	78385	11	12
3260267	78385	11	13	455-0048	78385	9	3
3260297	78385	9	7	457-0040	78385	2	4
3260556	78385	11	23	465-0118	78385	10	37
3750231	78385	10	15	465-0143	78385	3	5
3800137	78385	9	16	467-0041	78385	8	20
3800138	78385	9	8	48A113	78385	2	10
3800148	78385	9	23	50FK420	56878	9	17
3800178	78385	10	9	56878	10	12	
3800195	78385	10	11	56878	10	38	
3800196	78385	10	10	56878	11	2	
3810123	78385	2	5	608-0013	78385	9	2
407-0430	78385	6	5	628-0041	78385	11	7
407-0431	78385	5	12	628-0091	78385	11	4
407-0432	78385	1	36	645-0055	78385	2	3
407-0436	78385	4	5	701305	78385	4	10
408-0165	78385	10	33	9261	80201	11	28
408-0232	78385	9	2	99-4597-01	77200	7	61
408-0233	78385	2	11	99-4740-01	77200	7	4
408-0234	78385	4	16	99-4907	77200	7	14
408-0235	78385	3	10	99-4908	77200	7	45
408-0236	78385	2	1	99-5000-73	77200	7	5
410-0352	78385	3	11				
412-0103	78385	11	50				
414-0216	78385	11	34				
417-0074	78385	11	49				
419-0143	78385	9	27				
419-0147	78385	9	25				
4190160	78385	3	8				
421-0068	78385	9	18				
421-0069	78385	10	39				
421-0071	78385	11	17				
423-0051	78385	6	3				

By Order of the Secretary of the Army:

Official:

VERNE L. BOWERS,
*Major General, United States Army,
The Adjutant General.*

W. C. WESTMORELAND,
*General, United States Army,
Chief of Staff.*

Distribution:

To be distributed in accordance with DA Form 12-37, Direct and General Support Maintenance requirements for Armored Reconnaissance Airborne Assault Vehicle, 152MM, XM551.

RECOMMENDED CHANGES TO EQUIPMENT TECHNICAL PUBLICATIONS

 <p style="font-size: small; margin: 0;"><i>THEN...JOT DOWN THE DOPE ABOUT IT ON THIS FORM. CAREFULLY TEAR IT OUT, FOLD IT AND DROP IT IN THE MAIL.</i></p>		SOMETHING WRONG WITH PUBLICATION	
		FROM: (PRINT YOUR UNIT'S COMPLETE ADDRESS)	
		DATE SENT	
PUBLICATION NUMBER		PUBLICATION DATE	PUBLICATION TITLE
IN THIS SPACE, TELL WHAT IS WRONG AND WHAT SHOULD BE DONE ABOUT IT.			
BE EXACT PIN-POINT WHERE IT IS			
PAGE NO.	PARA-GRAPH	FIGURE NO.	TABLE NO.
PRINTED NAME, GRADE OR TITLE AND TELEPHONE NUMBER		SIGN HERE	

TM 5-4310-344-34P COMPRESSOR, RECIPROCATING, ELECTRIC MOTOR DRIVEN, 4 CFM - 1971

PIN: 75228-000